



SPARE PARTS LIST

FIREWOOD PROCESSOR

TITAN 40/20 PREMIUM



THE MANUFACTURER:

Uniforest d.o.o.
Latkova vas 81d
3312 Prebold
www.uniforest.si

Valid from serial number:

TITAN 40/20

431

INDEX

FIGURE 1: OPTIONAL EQUIPMENT	5
FIGURE 2: 900.02.00.0 - ARM KPL	7
FIGURE 3: 900.02.100.0 - SPRING KPL	10
FIGURE 4: 900.02.110.0 - TENSIONER SPRING KPL	10
FIGURE 5: 900.03.00.0 - FLAP, PISTON, CROSS KPL	11
FIGURE 6: 900.03.10.0 - FEED FLAP KPL.....	13
FIGURE 7: 900.03.70.0 - FLAP SPRING KPL	14
FIGURE 8: 900.03.75.0 - GRIPPER KPL	14
FIGURE 9: 900.03.90.0 - SPLITTING PISTON KPL.....	15
FIGURE 10: 900.03.150.0 - GRIPPER EXTENSION KPL	15
FIGURE 11: 900.04.00.0 - LIFT TABLE	16
FIGURE 12: 900.04.86.0 - PLASTIC ROLLER KPL	18
FIGURE 13: 900.04.97.0 - FOLDABLE ROLLER KPL	18
FIGURE 14: 900.04.200.0 - ROLLER RC 306 MM KPL	19
FIGURE 15: 900.04.210.0 - LIFT TABLE DRIVE ROLLER KPL	20
FIGURE 16: 900.04.220.0 - LIFT TABLE EXTENSION KPL	21
FIGURE 17: 900.04.230.0 - LIFT TABLE FOLDING ARM KPL	22
FIGURE 18: 900.04.240.0 - BASIC LIFT TABLE PART KPL.....	23
FIGURE 19: 900.04.245.0 - CHAIN TENSIONER KPL	24
FIGURE 20: 900.04.275.0 – CHAIN TENSIONER KPL	24
FIGURE 21: 900.04.250.0 - SLIDING ROLLER KPL	25
FIGURE 22: 900.04.260.0 - LIFT TABLE SIDE ROLLER KPL	25
FIGURE 23: 900.05.210.B - CONVEYOR BELT KPL	27
FIGURE 24: 900.05.215.B - CONVEYOR BELT BASIC KPL	30
FIGURE 25: 900.05.900.A - BELT KPL.....	32
FIGURE 26: 900.05.75.0 – HYDRAULIC CONVEYOR BELT OFFSET	33
FIGURE 27: 900.05.510.0 – SEPARATOR	34
FIGURE 28: 900.06.00.A - HYDRAULICS KPL	35
FIGURE 29: 900.06.120.0 - TANK TITAN 40/20 KPL	39
FIGURE 30: 900.06.150.0 / 900.06.160.0 - COOLER KPL	40
FIGURE 31: 900.11.00.A - MECHANISMS KPL	42
FIGURE 32: 900.11.100.0 – PISTON MECHANISM.....	43
FIGURE 33: 900.11.130.0 – VALVE CYLINDER KPL.....	44
FIGURE 33: 900.08.00.0 - PROTECTIVE COVERS (BASIC).....	45
FIGURE 34: 900.08.70 - FRONT RIGHT COVER	47
FIGURE 35: 900.08.200.0 / 900.08.300.0 PROTECTIVE COVERS (ADDITIONAL)	48
FIGURE 36: 900.08.400.0 - PROTECTIVE COVERS (PTO MODEL)	49
FIGURE 37: 900.08.500.0 - PROTECTIVE COVERS (ELECT. MOTOR).....	50
FIGURE 38: 900.09.00.0 - BOTTOM DRIVE KPL.....	51
FIGURE 39: 900.09.10.0 - ROLLER KPL	52
FIGURE 40: 900.09.20.0 - DRIVE ROLLER KPL.....	52
FIGURE 41: 900.09.100.0 TABLE SHORT (RC WITHOUT WHEELS)	53
FIGURE 42: 900.09.150.0 - SHORT TABLE (RC WITH WHEELS)	55
FIGURE 43: 900.10.00.0 - CHASSIS KPL	57
FIGURE 44: 900.10.100.0 - SUPPORT LEGS KPL	58
FIGURE 45: 900.12.00.0 - ELECTRICAL EQUIPMENT KPL	59

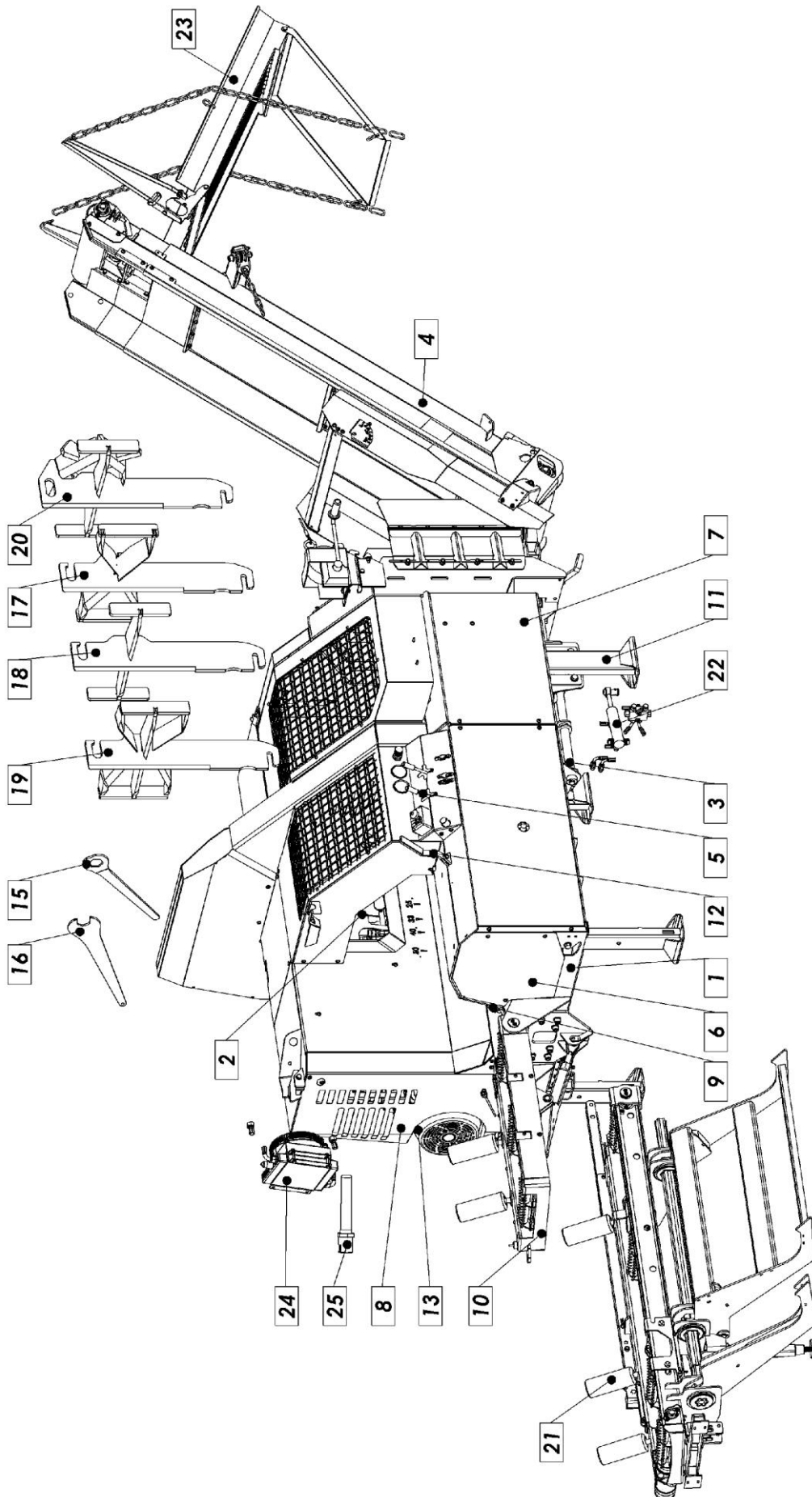


Figure 1: Optional equipment

Pos.	Name	Number			
		CD 900.00.00.0	CDE 900.55.00.0	CD TR 900.50.00.0	CDE TR 900.60.00.0
1	Frame	900.01.00.0	900.01.00.0	900.01.00.0	900.01.00.0
2	Arm	900.02.00.0	900.02.00.0	900.02.00.0	900.02.00.0
3	Flap, piston and cross	900.03.00.0	900.03.00.0	900.03.00.0	900.03.00.0
4	Telescopic conveyor belt 5m	900.05.210.B	900.05.210.B	900.05.210.B	900.05.210.B
5	Hydraulics	900.06.00.A	900.06.00.A	900.06.00.A	900.06.00.A
6	Protective covers basic	900.08.00.0	900.08.00.0	900.08.00.0	900.08.00.0
7	Protective covers	900.08.200.0	900.08.200.0	900.08.300.0	900.08.300.0
8	Protective covers	900.08.400.0	900.08.500.0	900.08.400.0	900.08.500.0
9	Bottom drive	900.09.00.0	900.09.00.0	900.09.00.0	900.09.00.0
10	Table short	900.09.100.0	900.09.100.0	900.09.100.0	900.09.100.0
11	Chassis	900.10.100.0	900.10.100.0	900.10.00.0	900.10.00.0
12	Mechanism	900.11.00.A	900.11.00.A	900.11.00.A	900.11.00.A
13	Electrical equipment	/	900.12.00.0	/	900.12.00.0
14	Rivet	1003685	1003685	1003685	1003685
15	Socket wrench 55	900.00.04.0	900.00.04.0	900.00.04.0	900.00.04.0
16	Spanner 55	900.00.03.0	900.00.03.0	900.00.03.0	900.00.03.0
17	Splitting knife 2-6	900.00.90.0	900.00.90.0	900.00.90.0	900.00.90.0
18	Splitting knife 2-4	900.00.110.0	900.00.110.0	900.00.110.0	900.00.110.0
19	Splitting knife 2-8	900.00.120.0	900.00.120.0	900.00.120.0	900.00.120.0
20	Splitting knife 2-12	900.00.150.0	900.00.150.0	900.00.150.0	900.00.150.0
21	Adjustable hydraulic lifting table	900.04.00.0	900.04.00.0	900.04.00.0	900.04.00.0
22	Hydraulic conveyor L/R movement	900.05.75.A	900.05.75.A	900.05.75.A	900.05.75.A
23	Separator	900.05.510.A	900.05.510.A	900.05.510.A	900.05.510.A
24	Oil cooler (CD)	900.06.160.0	900.06.150.0	900.06.160.0	900.06.150.0
25	Oil heater	900.12.30.0	/	900.12.30.0	/

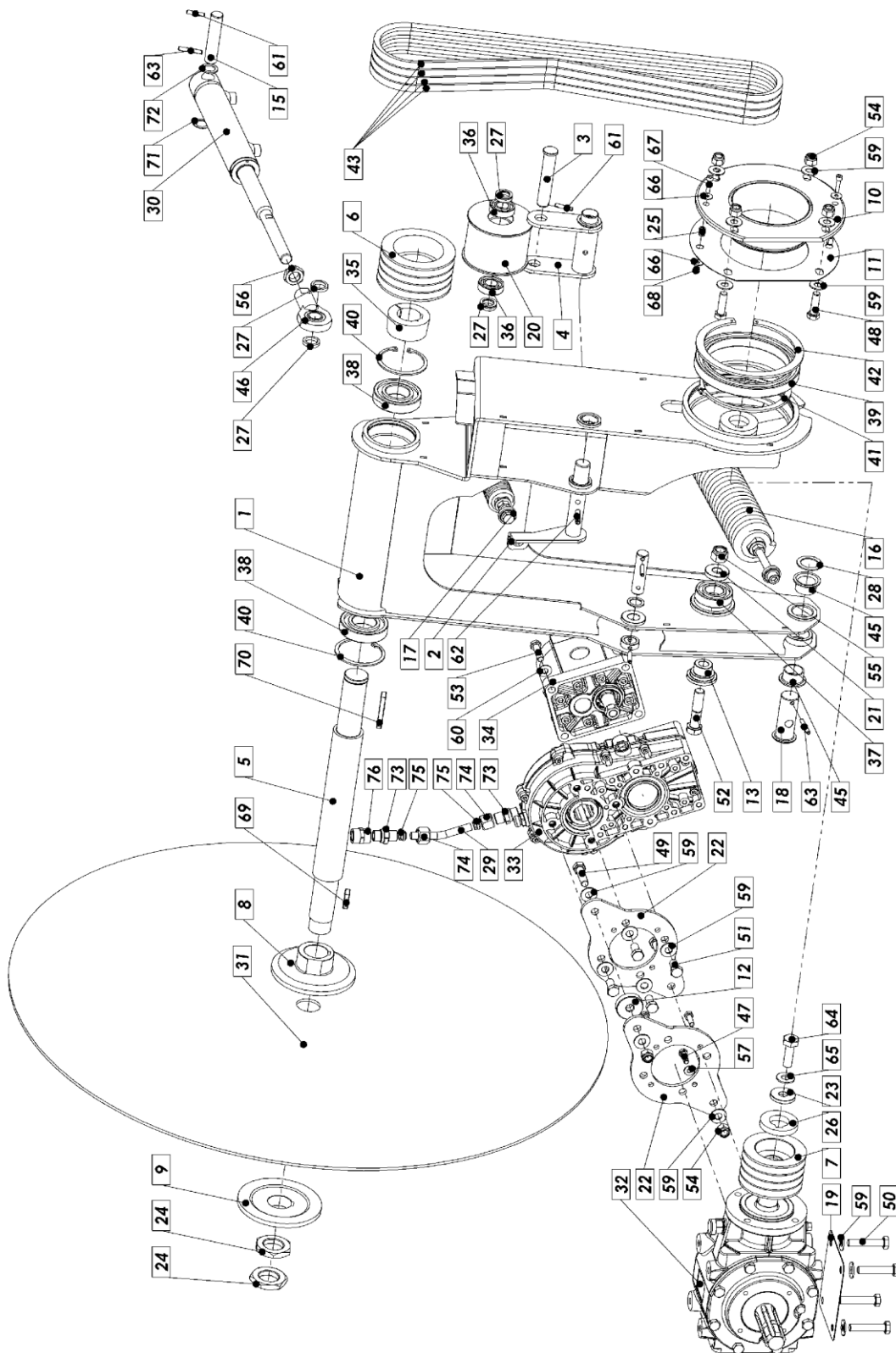


Figure 2: 900.02.00.0 - Arm kpl.

Pos.	Name	Number of	pieces
1	Arm	1	900.02.20.0
2	Spring tensioner	1	900.02.40.0
3	Bolt	1	900.02.43.0
4	Tensioner bracket	1	900.02.45.0
5	Shaft	1	900.02.47.A
6	Pulley 118 (123,5)	1	900.02.51.0
7	Pulley 100	1	900.02.48.B
8	Leaf hub	1	900.02.71.0
9	Blade hub	1	900.02.72.0
10	Hub	1	900.02.80.0
11	Flange	1	900.02.83.0
12	Sleeve	2	900.02.84.0
13	Arm sleeve	1	900.02.91.0
14	Bolt	1	900.02.92.0
15	Bolt	2	900.02.94.0
16	Spring kit	1	900.02.100.0
17	Spring tensioner kit	1	900.02.110.0
18	Bolt	1	900.02.111.0
19	Liner plate	1	900.02.119.0
20	Tensioner	1	900.02.121.0
21	Sleeve	1	900.02.122.0
22	Reducer plate	2	900.02.137.0
23	Washer	1	900.02.141.0
24	Nut M36x1,5 Zn	2	900.02.153.0
25	Spring pin 10x45	2	1000219
26	Sleeve	4	900.02.164.0
27	Washer insert 20.5x28	7	900.02.170.0
28	Washer insert 30.5x22x2	1	900.02.180.0
29	Tube	1	900.02.182.0
30	Hyd. arm roller	1	900.06.55.0
31	Saw blade carbide (Widia)	1	1012785
32	Gear	1	1012356
33	Gearbox	1	1012355
34	Tandem	1	1012366
35	Cone n 40 14 - 955	1	1010636
36	Bearing 6004 2RS	2	1000322
37	Bearing 6206 ZZ	1	1000331
38	Bearing 6208 2RS	2	1000313
39	Bearing 61828 2RS	1	1010638
40	Retaining ring N 80X2,5	2	1000384

41	Retaining ring Z140x4	1	1010644
42	Retaining ring N175x4	1	1010645
43	V-belt	4	1011802
44	Sleeve PRMF 25	2	1014328
45	Sleeve FB1 3020	2	1000716
46	End piece	1	1010622
47	Screw M8x25 Zn	4	1000052
48	Screw M12x40 Zn	4	1000059
49	Screw M12x45 Zn	2	1000108
50	Screw M12x65 Zn	5	1000045
51	Screw M12x25 Zn	4	1003448
52	Screw M16x70	1	1014396
53	Screw M10x40 Zn	4	1012762
54	Nut M12 Zn	6	1000142
55	Nut M16 Zn	1	1000143
56	Nut M20x1,5 Zn	1	1010749
57	Washer M8 SKM	4	1009844
58	Nut M12 Zn	1	1000139
59	Washer M12 SKM	20	1000176
60	Washer M10 SKM	4	1000169
61	Spring latch 6x30	6	1000214
62	Spring pin 8x36	1	1000229
63	Spring latch 6x40	2	1000208
64	Screw M14x45 Zn	1	1006749
65	Washer M14 SKM	1	1000154
66	Washer M6 Zn	4	1000173
67	Hex cap socket screw M6x25	2	1000103
68	Nut M6 Zn	2	1003712
69	Dowel 12x8x36-A	1	1016043
70	Dowel 12x8x70-A	1	1016046
71	Washer 20x28x1	1	1012389
72	Washer 20x28x2 Zn	1	1011909
73	Hydraulic connection GE12LREDDMD	2	1000630
74	Hydraulic nut M12L	2	1019948
75	Ring notch PSR12LX	2	1019949
76	Hydraulic connection 3/8-3/8 NN	1	1020063

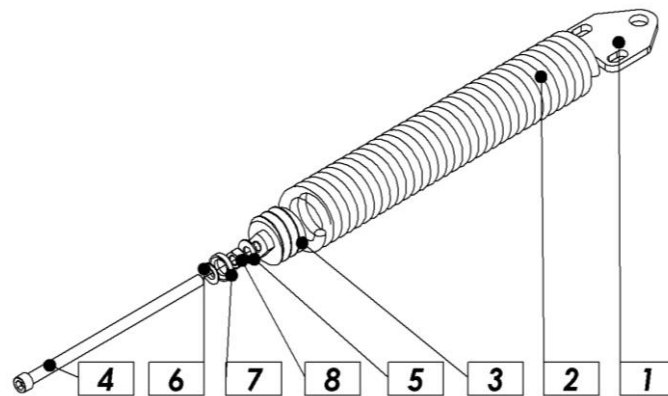


Figure 3: 900.02.100.0 - Spring kpl.

Pos.	Name	No. of pieces	Number
1	Spring holder	1	900.02.101.0
2	Compression spring	1	900.02.102.0
3	Spring holder	1	900.02.103.0
4	Hex cap socket screw M12x310	1	1011905
5	Washer M12 SKM	1	1000176
6	WASHER C 13x24x4,6	1	1014400
7	WASHER D 19x30x6,2	1	1014401
8	Nut M12 Zn	1	1000139

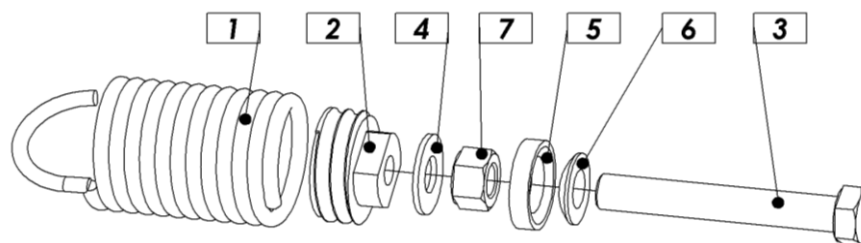


Figure 4: 900.02.110.0 - Tensioner spring kpl.

Pos.	Name	No. of pieces	Number
1	Compression spring	1	900.02.114.0
2	Spring holder	1	900.02.116.0
3	Screw M12x80 Zn	1	1000046
4	Washer M12 SKM	1	1000176
5	WASHER D 19x30x6,2	1	1014401
6	WASHER C 13x24x4,6	1	1014400
7	Nut M12 Zn	1	1000139

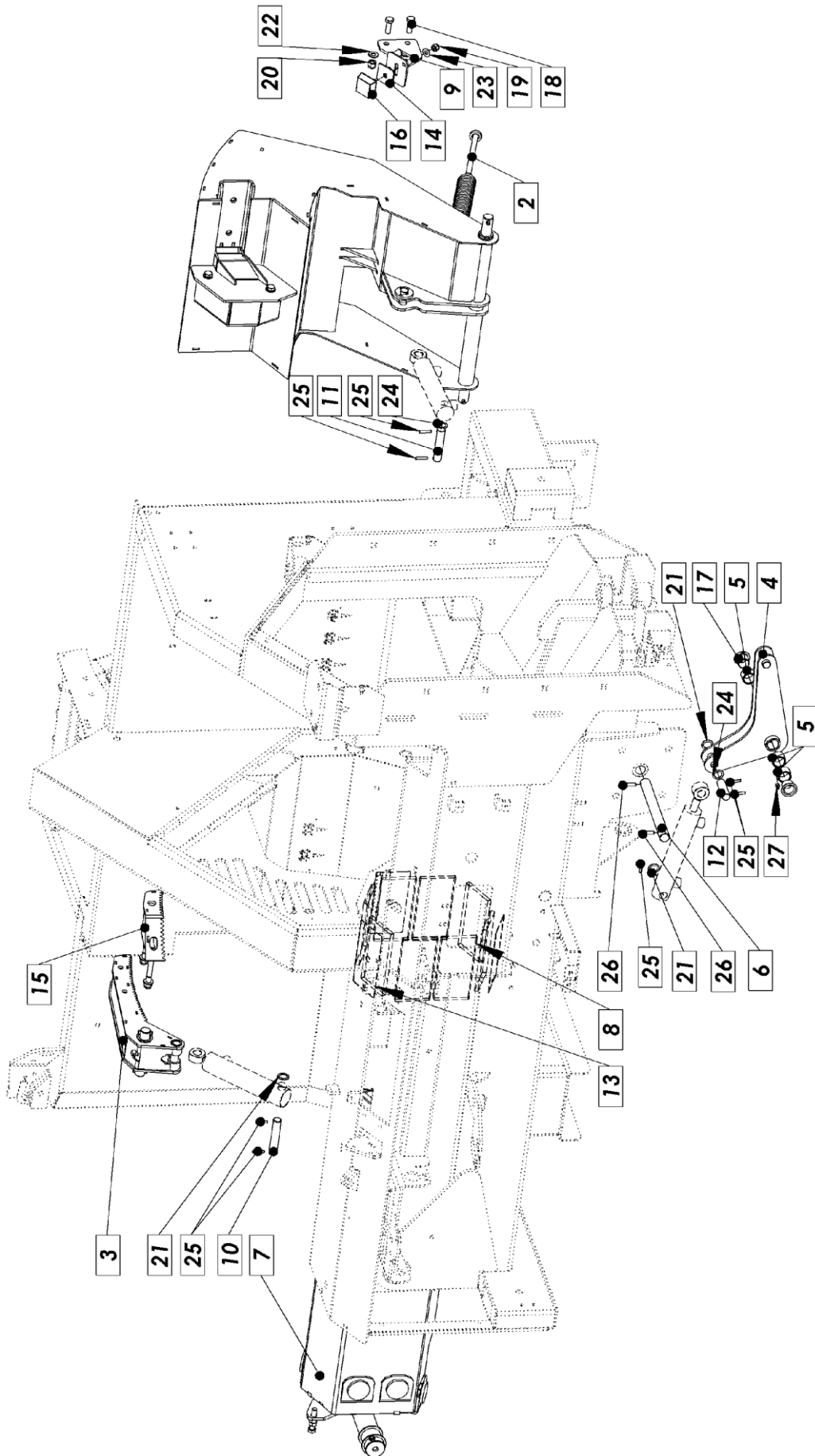


Figure 5: 900.03.00.0 - Flap, piston, cross kpl.

Pos.	Name	No. of pieces	Number
1	Feed flap	1	900.03.10.0
2	Flap spring	1	900.03.70.0
3	Gripper	1	900.03.75.0
4	Wedge mechanism	1	900.03.80.0
5	Wedge sleeve 1	3	900.03.81.0
6	Bolt	1	900.03.86.0
7	Splitting piston	1	900.03.90.0
8	Plastic sliding rectangular 10mm	8	900.03.98.A
9	Limitier	1	900.03.105.A
10	Arm bolt 1	1	900.03.118.0
11	Arm bolt 1	1	900.03.119.0
12	Arm bolt 1	1	900.03.122.0
13	Plate	3	900.03.128.0
14	Damper washer	1	900.03.129.0
15	Gripper extension	1	900.03.150.0
16	Rubber metal damper	1	1010836
17	Sleeve PRMF 25	2	1014328
18	Screw M12x35 Zn	2	1000058
19	Nut M10 Zn	1	1003461
20	Nut M12 Zn	2	1000142
21	Washer 20x28x2 Zn	3	1011909
22	Washer M12 SKM	2	1000176
23	Washer M10 SKM	1	1000169
24	Washer 20x28x1	2	1012389
25	Spring latch 6x30	7	1000214
26	Spring pin 8x40	2	1017343
27	Grease fitting M8 x 1	1	1000234

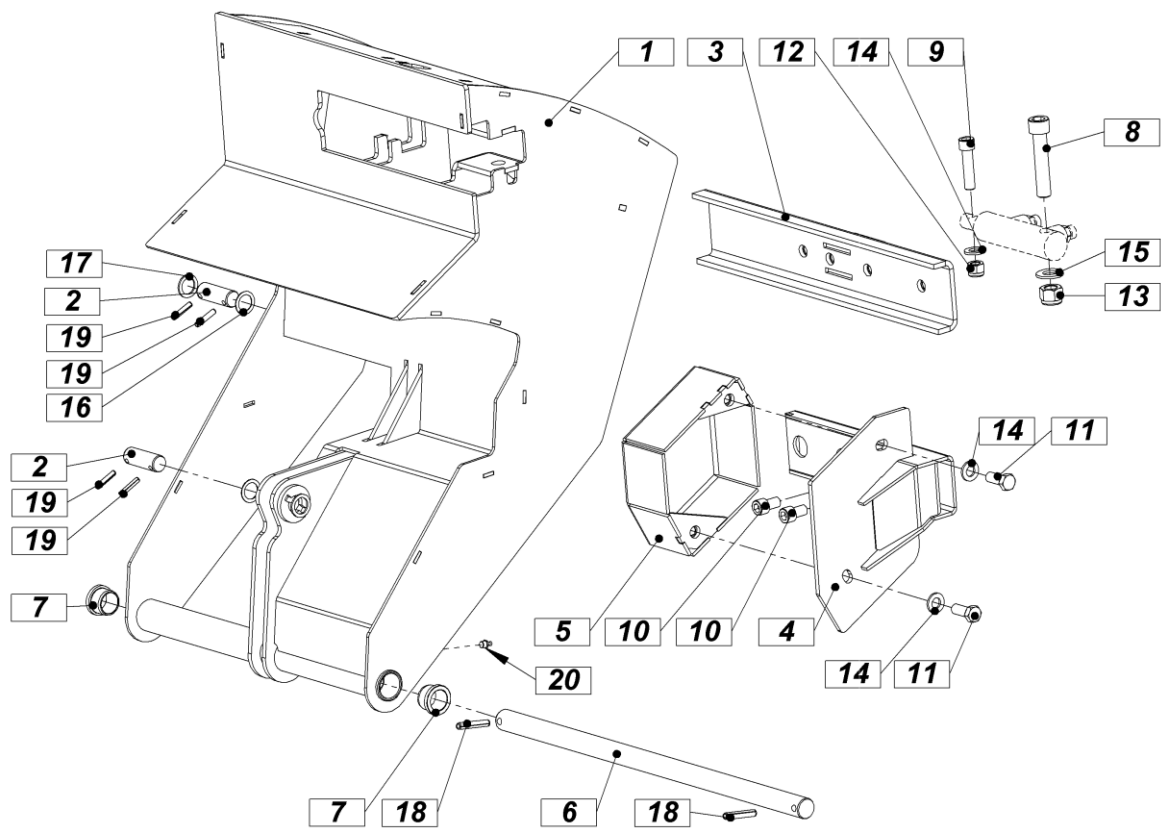


Figure 6: 900.03.10.0 - Feed flap kpl.

Pos.	Name	No. of pieces	Number
1	Feed flap var.	1	900.03.15.0
2	Bolt	2	900.03.28.0
3	Guide	1	900.03.40.0
4	Movable guide	1	900.03.50.0
5	Limiter 25	1	900.03.57.0
6	Bolt	1	900.03.99.0
7	SLEEVE BNZF 25X30 L=22mm	2	1012479
8	SCREW M16 x 80 ZN Hex cap socket	1	1016042
9	Hex cap socket screw M12x50	1	1000124
10	Hex cap socket screw M12x20	2	1010618
11	Screw M12x30 Zn	2	1000057
12	Nut M12 Zn	1	1000142
13	Nut M16 Zn	1	1000143
14	Washer M12 SKM	3	1000176
15	Washer M16 SKM	1	1000177
16	Washer 20x28x1	2	1012389
17	Washer 20x28x2 Zn	2	1011909
18	Spring pin 8x45	2	1000230
19	Spring pin 6x30	4	1000214
20	Grease fitting M8 x 1	1	2000234

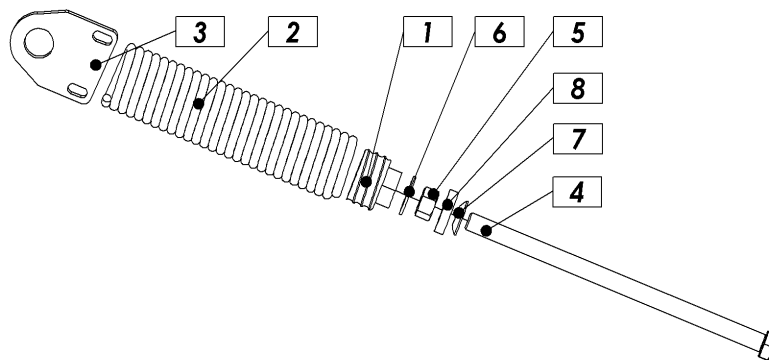


Figure 7: 900.03.70.0 - Flap spring kpl.

Pos.	Name	Number of	pieces
1	Spring holder	1	900.03.111.0
2	Compression spring	1	900.03.115.0
3	Spring bracket	1	900.03.116.0
4	Screw M12x220 Zn	1	1000122
5	Nut M12 Zn	1	1000139
6	Washer M12 SKM	1	1000176
7	WASHER C 13x24x4,6	1	1014400
8	WASHER D 19x30x6,2	1	1014401

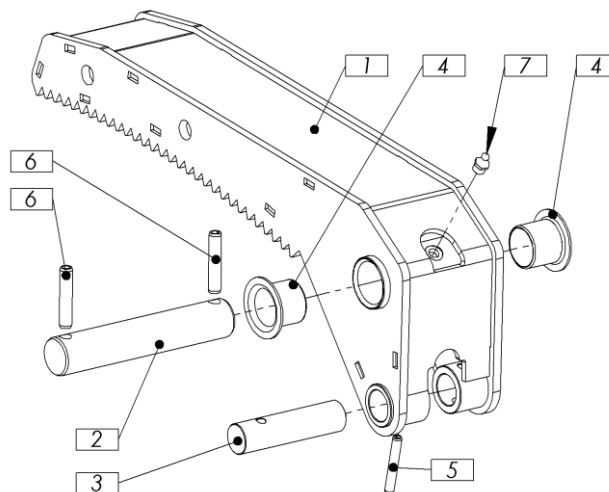


Figure 8: 900.03.75.0 - Gripper kpl.

Pos.	Name	No. of pieces	Number
1	Retainer	1	900.03.60.0
2	Arm bolt	1	900.03.66.0
3	Bolt	1	900.03.121.0
4	SLEEVE PRMF 252825	2	1000208
5	Spring pin 6x40	1	1017343
6	Spring pin 8x40	2	1000229
7	Grease fitting M8 x 1	1	1000234

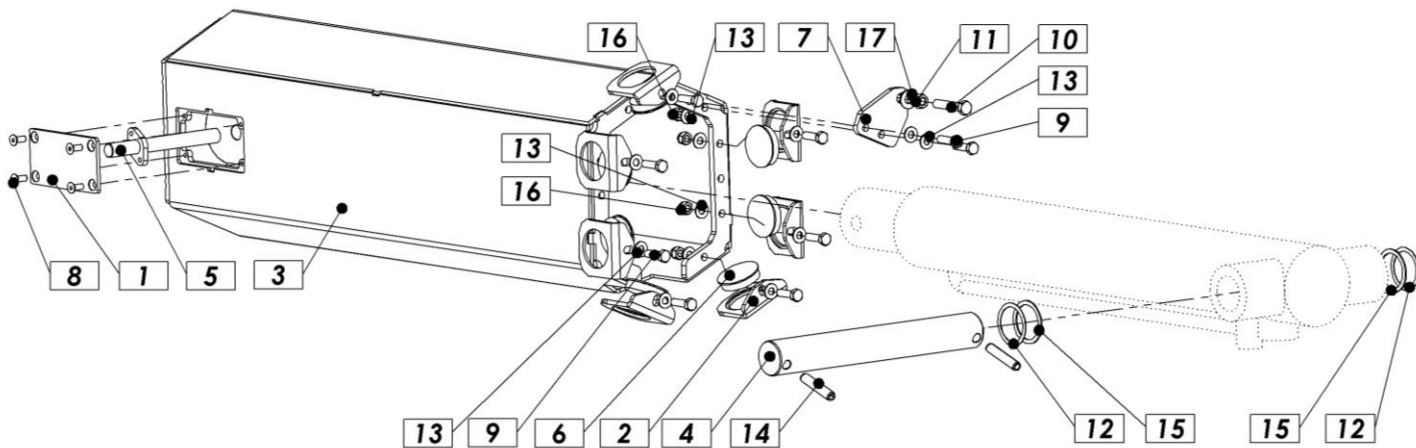


Figure 9: 900.03.90.0 - Splitting piston kpl.

Pos.	Name	Number of	pieces
1	Cover	1	900.03.88.0
2	Sliding plastic bracket	7	900.03.89.A
3	Piston var.	1	900.03.100.0
4	PISTON CYLINDER BOLT	1	900.03.104.0
5	Bolt var	1	900.03.125.0
6	Sliding plastic	7	900.03.127.A
7	Bracket var.	1	900.11.65.0
8	Screw M8X16	4	1000115
9	Screw M10x35 Zn	9	1000112
10	Screw M12x65 Zn	1	1000045
11	Nut M12 Zn	1	1000139
12	Washer 50x62x1 Zn	3	1003544
13	Washer M10 SKM	18	1000169
14	Spring pin 13x70	2	1020321
15	Washer 50x62x2 Zn	3	1010492
16	Nut M10 Zn	9	1003461

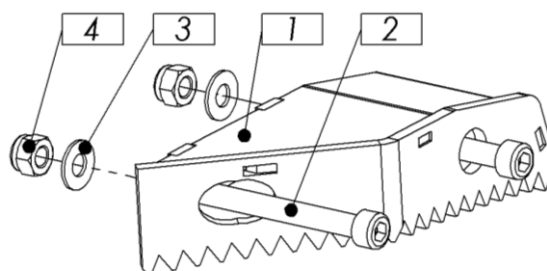


Figure 10: 900.03.150.0 - Gripper extension kpl.

Pos.	Name	No. of pieces	Number
1	Retainer extension var.	1	900.03.140.0
2	SCREW M12 x 105 ZN HEX CAP SOCKET	2	1007750
3	Washer M12 SKM	2	1000176
4	Nut M12 Zn	2	1000142

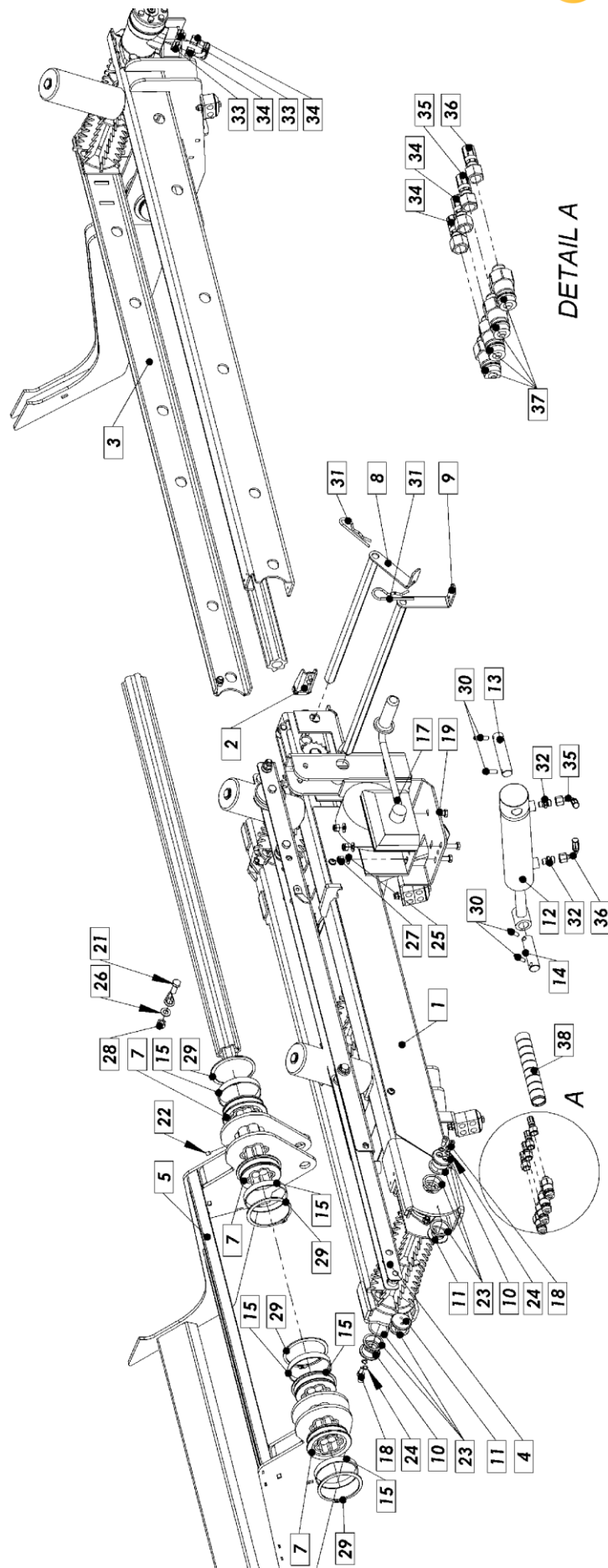


Figure 11: 900.04.00.0 - Lift table

Pos.	Name	No. of pieces	Number
1	Basic lift table part	1	900.04.240.0
2	Lift table side roller	1	900.04.260.0
3	Lift table extension	1	900.04.220.0
4	Lift table folding arm	1	900.04.230.0
5	Lifting arm	1	900.04.50.0
6	PTO shaft S5	1	900.04.73.0
7	Keeping the cardan	4	900.04.150.A
8	Table locking dowel pin 1	1	900.04.170.A
9	Lift table lock 2	1	900.04.180.A
10	Lift table support. dowel B Zn	2	900.04.114.0
11	Lift table support. dowel A Zn	2	900.04.115.0
12	Lift table cylinder	1	900.06.65.0
13	Bolt 25 X 118 Zn	1	900.04.83.0
14	Bolt 25 X 93 Zn	1	900.04.84.0
15	Sliding sleeve 100/105x15	6	900.04.248.0
16	Lift table rope	1	900.04.05.0
17	Winch manual	1	1013153
18	Hexagon socket screw M8x20	4	1000107
19	Screw M10x30 Zn	2	1000100
20	Screw M10x25 Zn	1	1000061
21	Screw M12x30 Zn	1	1000057
22	Threaded pin M8x12	1	1011910
23	Washer 40x50x1	6	1000190
24	Washer M8 SKZ	4	1000180
25	Washer M10 SKM	3	1000169
26	Washer M12 SKM	1	1000176
27	Nut M10 Zn	3	1003461
28	Nut M12 Zn	1	1000142
29	Retaining ring Z100x3	4	1009762
30	Spring pin 8x36	4	1000229
31	Pin R 5x100 mm	2	1000217
32	Hyd. Attachment GE10LREDOMD	2	1000643
33	Hyd. coupling GE10LR1/2EDOMD	2	1013624
34	Hyd. hose 1SN DN08 3300 M-16/M-90-16	2	1013968
35	Hyd. hose 1SN DN08 1650 M-16/M-90-16	1	1013970
36	Hyd. hose 1SN DN08 1700 M-16/M-90-16	1	1013969
37	QUICK COUPLING HYD. 16X1,5 Z.M-DNP	4	1000775
38	Hose protection - Spiral 35 mm	1	1014104
39	Plaque de support de guide 2 Zn	1	900.04.300.0

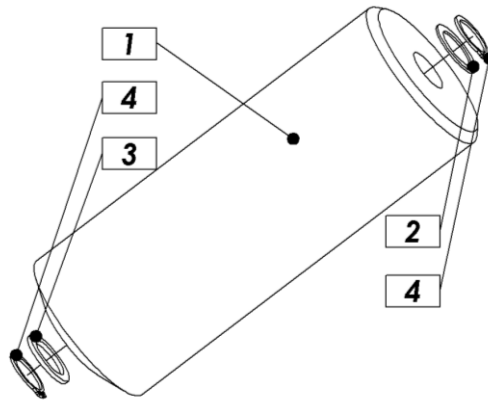


Figure 12: 900.04.86.0 - Plastic roller kpl.

Pos.	Name	No. of pieces	Number
1	Plastic roller	1	900.04.81.0
2	Washer 20x28x1	1	1012389
3	Washer 20x28x2 Zn	1	1011909
4	Retaining ring Z20x1.2	2	1000267

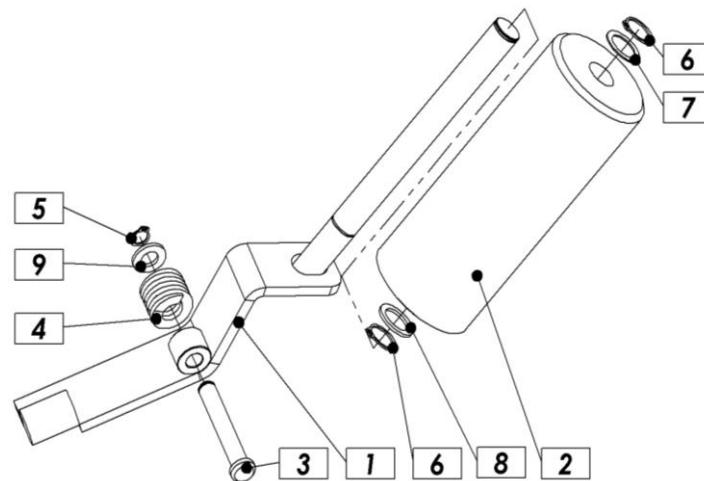


Figure 13: 900.04.97.0 - Foldable roller kpl.

Pos.	Name	No. of pieces	Number
1	Offset roller mech. VAR	1	900.04.90.0
2	Plastic roller	1	900.04.81.0
3	Roller dowel pin flexible	1	900.04.74.0
4	Spring flat	1	1001066
5	Retaining ring Z12x1	1	1000274
6	Retaining ring Z20x1.2	2	1000267
7	Washer 20x28x1	1	1012389
8	Washer 20x28x2 Zn	1	1011909
9	Washer M12 Zn	1	1000161

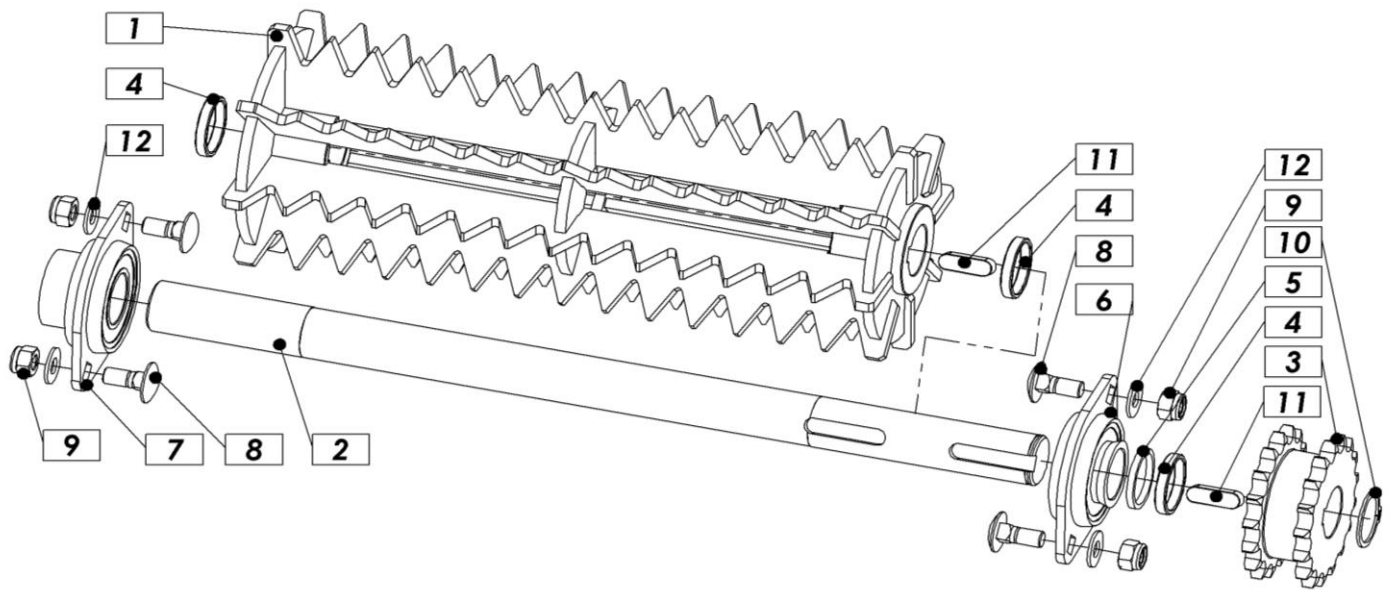


Figure 14: 900.04.200.0 - Roller RC 306 mm kpl.

Pos.	Name	No. of pieces	Number
1	Roller toothed	1	900.04.120.0
2	Shaft	1	900.04.85.0
3	Gear wheel Z=17 08B-2	1	900.09.36.0
4	Washer 25,5 x 30 x 5	3	900.09.41.0
5	Washer 25,5 x 30 x 3	1	900.09.47.0
6	Bearing RAT 25	1	1009761
7	Bearing RAT 25	1	1009761
8	Screw M8×20 carriage	4	1010560
9	Nut M8 Zn	4	1003460
10	Retaining ring Z25x1.2	1	1004716
11	DOWEL 8x7x25 A	2	1011280
12	Washer M8 SKM	4	1009844

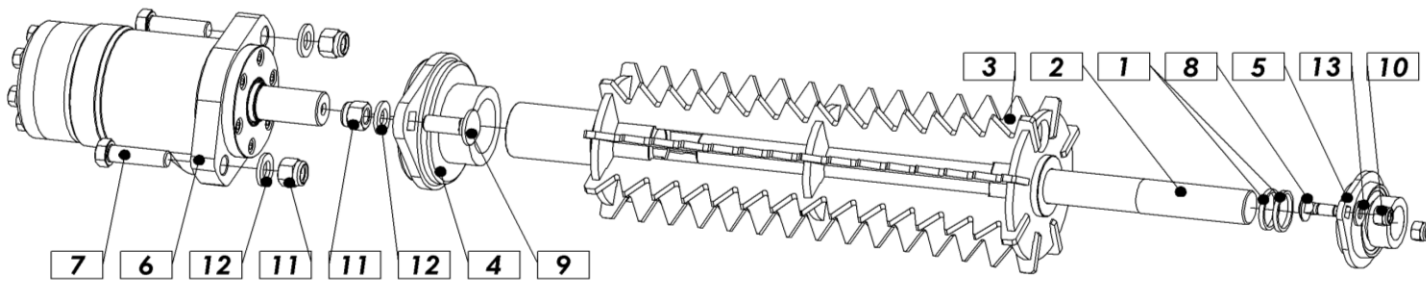


Figure 15: 900.04.210.0 - Lift table drive roller kpl.

Pos.	Name	No. of pieces	Number
1	Washer 25,5 x 30 x 3	2	900.09.47.0
2	Roller shaft	1	900.04.78.0
3	Drive roller lift table VAR	1	900.04.130.0
4	BEARING RAT40	1	1009760
5	Bearing RAT 25	1	1009761
6	Hydraulic motor MR 160 - RC	1	1011436
7	Screw M12x40 Zn	2	1000059
8	Screw M8x20 carriage	2	1010560
9	Screw M12 x 30 carriage	2	1014538
10	Nut M8 Zn	2	1003460
11	Nut M12 Zn	4	1000142
12	Washer M12 Zn	4	1000161
13	Washer M8 SKM	2	1009844

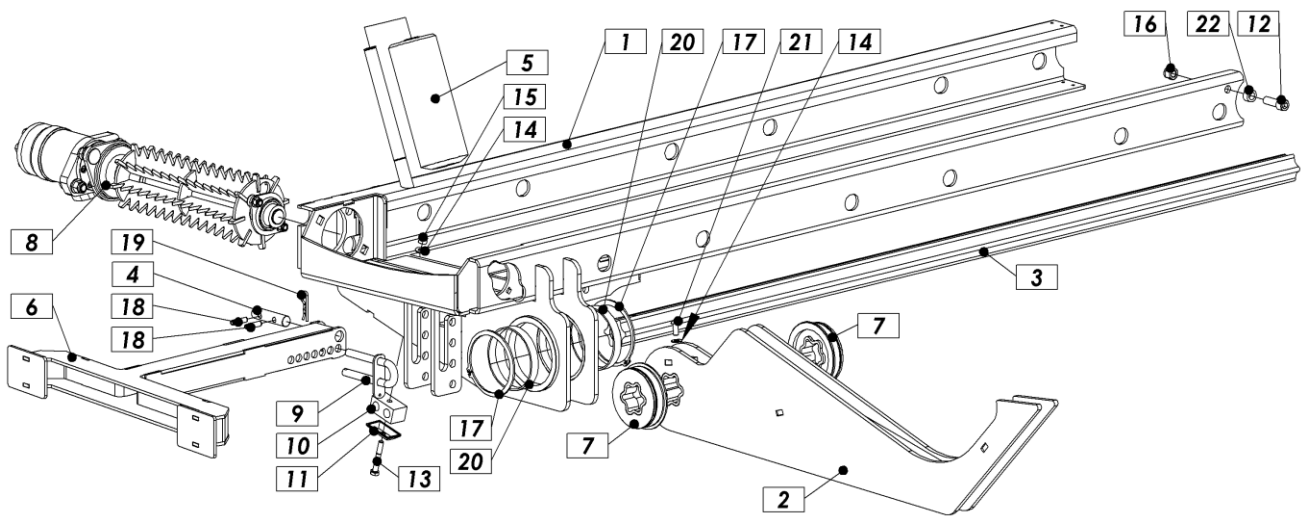


Figure 16: 900.04.220.0 - Lift table extension kpl.

Pos.	Name	No. of pieces	Number
1	Telescopic lift table profile	1	900.04.30.A
2	Rear lift arm	1	900.04.60.0
3	Cardan shaft Zn	1	900.04.72.0
4	Bolt 18 X 74 Zn	1	900.04.79.0
5	Plastic roller	1	900.04.86.0
6	Support leg	1	900.04.140.0
7	Universal joint guide	2	900.04.160.A
8	Lift table drive roller	1	900.04.210.0
9	Attachment protection	1	502.12.10.0
10	Hose connection	1	1000667
11	Upper plate	1	1009620
12	Hexagon screw M12x35	1	1011281
13	Screw M8x50 Zn	1	1012621
14	Washer M8 SKM	2	1009844
15	Nut M8 Zn	1	1003460
16	Nut M12 Zn	1	1000142
17	Retaining ring Z100x3	2	1009762
18	Spring pin 8x32	2	1000226
19	PIN R 3x52 mm	1	1000210
20	Sliding sleeve 100/105x15	2	900.04.248.0
21	Screw M8x20 Zn	1	1005185
22	BUSHING 12,3 / 20 - 8,5 ZN	1	900.05.254.0

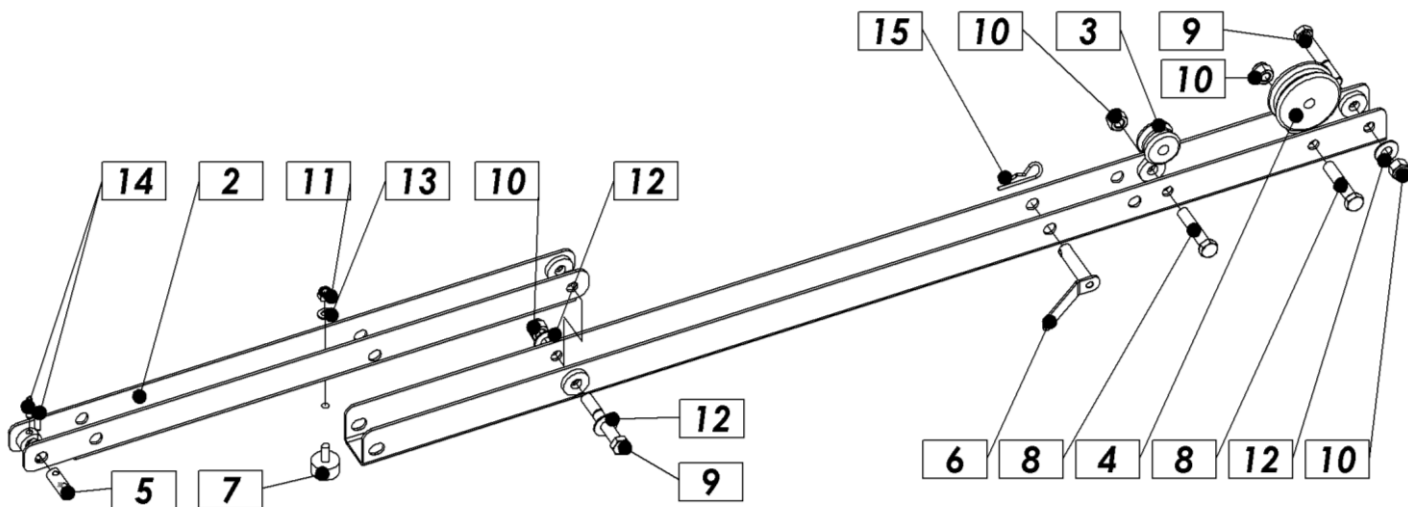


Figure 17: 900.04.230.0 - Lift table folding arm kpl.

Pos.	Name	Number of	pieces
1	Supporting arm long	1	900.04.100.0
2	Supporting arm short	1	900.04.110.0
3	Lift arm wire rope roller Zn	1	900.04.95.0
4	Lift arm wire rope roller Zn	1	900.04.99.0
5	Lift table dowel pin up. Zn	1	900.04.106.0
6	Lift table dowel pin	1	900.04.221.0
7	RUBBER DAMPER TYPE D 30_15 M8X20	1	1011799
8	Screw M12x60 Zn	2	1000076
9	Screw M12x80 Zn	2	1000046
10	Nut M12 Zn	4	1000142
11	Nut M8 Zn	1	1003460
12	Washer M12 SKM	3	1000176
13	Washer M8 Zn	1	1003465
14	Spring pin 6x26	2	1000228
15	PIN R 3x52 mm	1	1000210

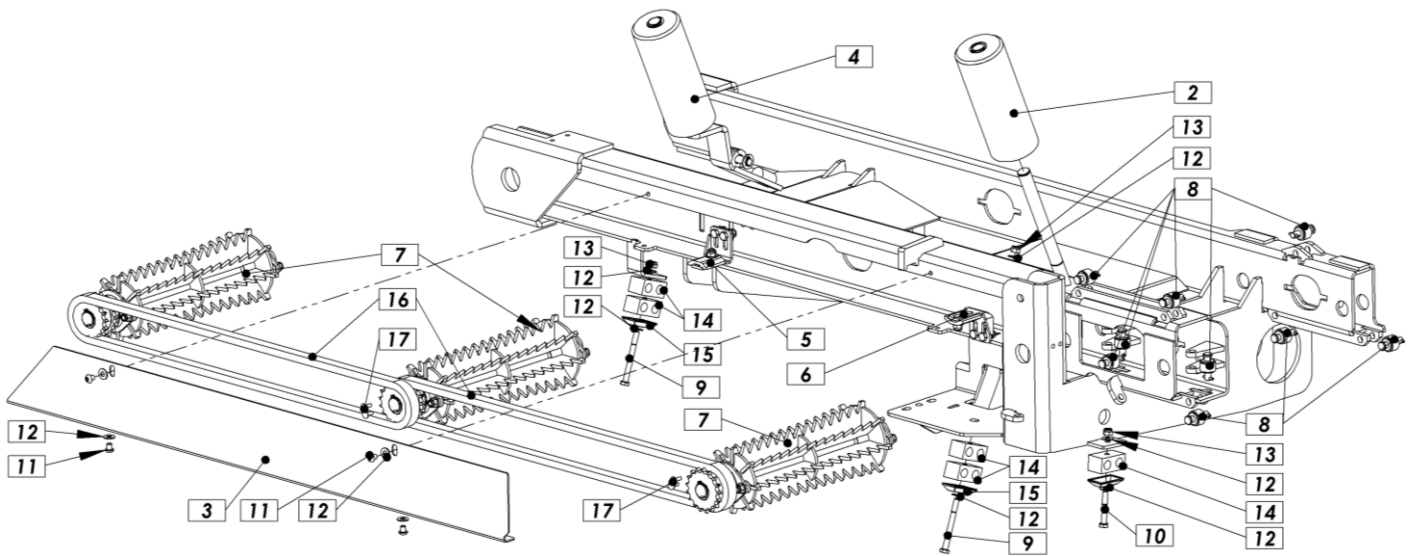


Figure 18: 900.04.240.0 - Basic lift table part kpl.

Pos.	Name	Number of	pieces
1	Fixed lift table part	1	900.04.10.0
2	Roller plastic	1	900.04.86.0
3	Lift table cover	1	900.04.71.0
4	Foldable roller	1	900.04.97.0
5	External chain tightener	1	900.04.275.0
6	Internal chain tightener	1	900.04.245.0
7	Roller RC 306.1mm	3	900.04.200.0
8	Sliding rollers assembly	9	900.04.250.0
9	Screw M8x80 Zn	2	1000046
10	Screw M8x55 Zn	1	1000041
11	Screw M8x10 Zn	4	1010646
12	Washer M8 SKM	10	1009844
13	Nut M8 Zn	3	1003460
14	Attachment tube 2D 215/15 PP	5	1000667
15	UPPER PLATE CF2	3	1009620
16	Chain RK 08 B-1 (Lange 123 x 12,7 = 1562)	2	1014453
17	Joint link SG 08-1	2	1010675

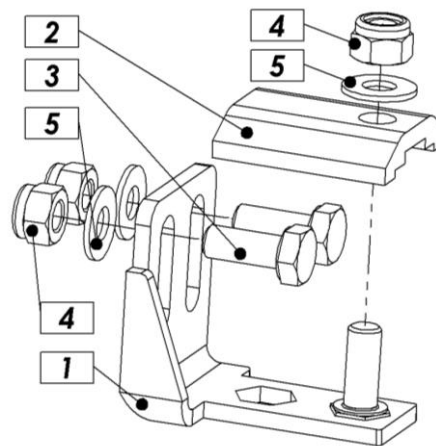


Figure 19: 900.04.245.0 - Chain tensioner kpl.

Pos.	Name	No. of pieces	Number
1	Chain tens. lift table	1	900.04.255.0
2	Chain sliding plastic	1	900.04.247.0
3	Screw M8x20 Zn	2	1000051
4	Nut M8 Zn	3	1003460
5	Washer M8 SKM	3	1009844

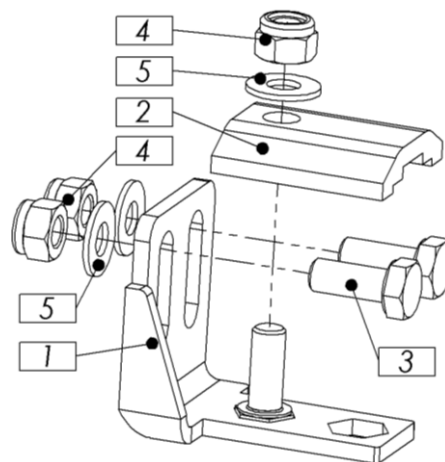


Figure 20: 900.04.275.0 – Chain tensioner kpl.

Pos.	Name	No. of pieces	Number
1	Chain tens. lift table VAR	1	900.04.255.0
2	Chain sliding plastic	1	900.04.247.0
3	Screw M8x20 Zn	2	1000051
4	Nut M8 Zn	3	1003460
5	Washer M8 SKM	3	1009844

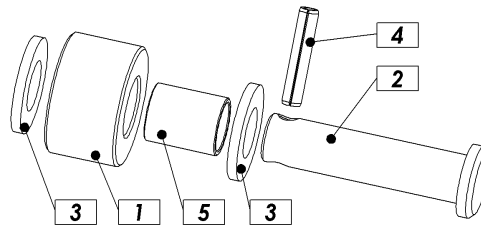


Figure 21: 900.04.250.0 - Sliding roller kpl.

Pos.	Name	No. of pieces	Number
1	Table guiding roller Zn	1	900.04.75.0
2	Roller guiding dowel pin Zn	1	900.04.76.0
3	Washer M10 Zn	2	1003731
4	Spring pin 4x20	1	1000207
5	Sleeve PAP 1015-P14	1	1009759

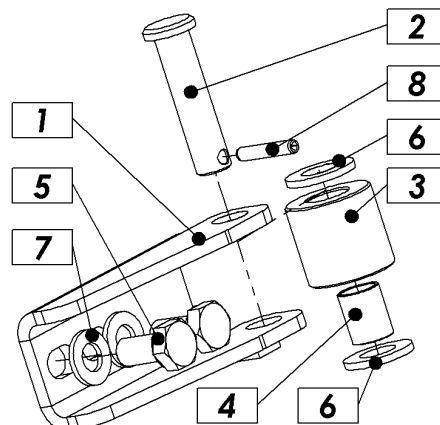


Figure 22: 900.04.260.0 - Lift table side roller kpl.

Pos.	Name	No. of pieces	Number
1	Telescope limiter side	1	900.04.190.0
2	Roller guiding dowel pin Zn	1	900.04.76.0
3	Side_roller ZN	1	900.04.88.0
4	SLEEVE PAP 1015-P14	1	1009759
5	Screw M8x16 Zn	2	1000050
6	Washer M10 Zn	2	1003731
7	Washer M8 Zn	2	1003465
8	Spring pin 4x20	1	1000207

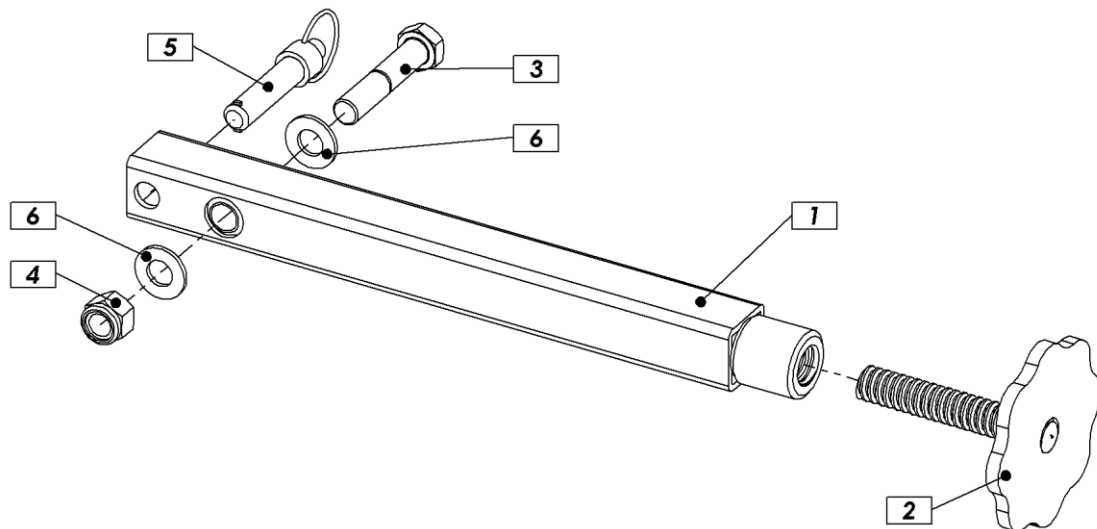


Figure 23: 900.04.300.0 - Plaque de support de guide 2 Zn

Pos.	Name	No. of pieces	Number
1	Support leg weld.	1	900.04.280.0
2	Leg extension section weld.	1	900.04.285.0
3	Screw M16x80 Zn	1	1000106
4	Nut M16 Zn	1	1000143
5	LOCK PIN 16 X 60 WITH RING	1	1026400
6	Washer M16 SKM	2	1000177

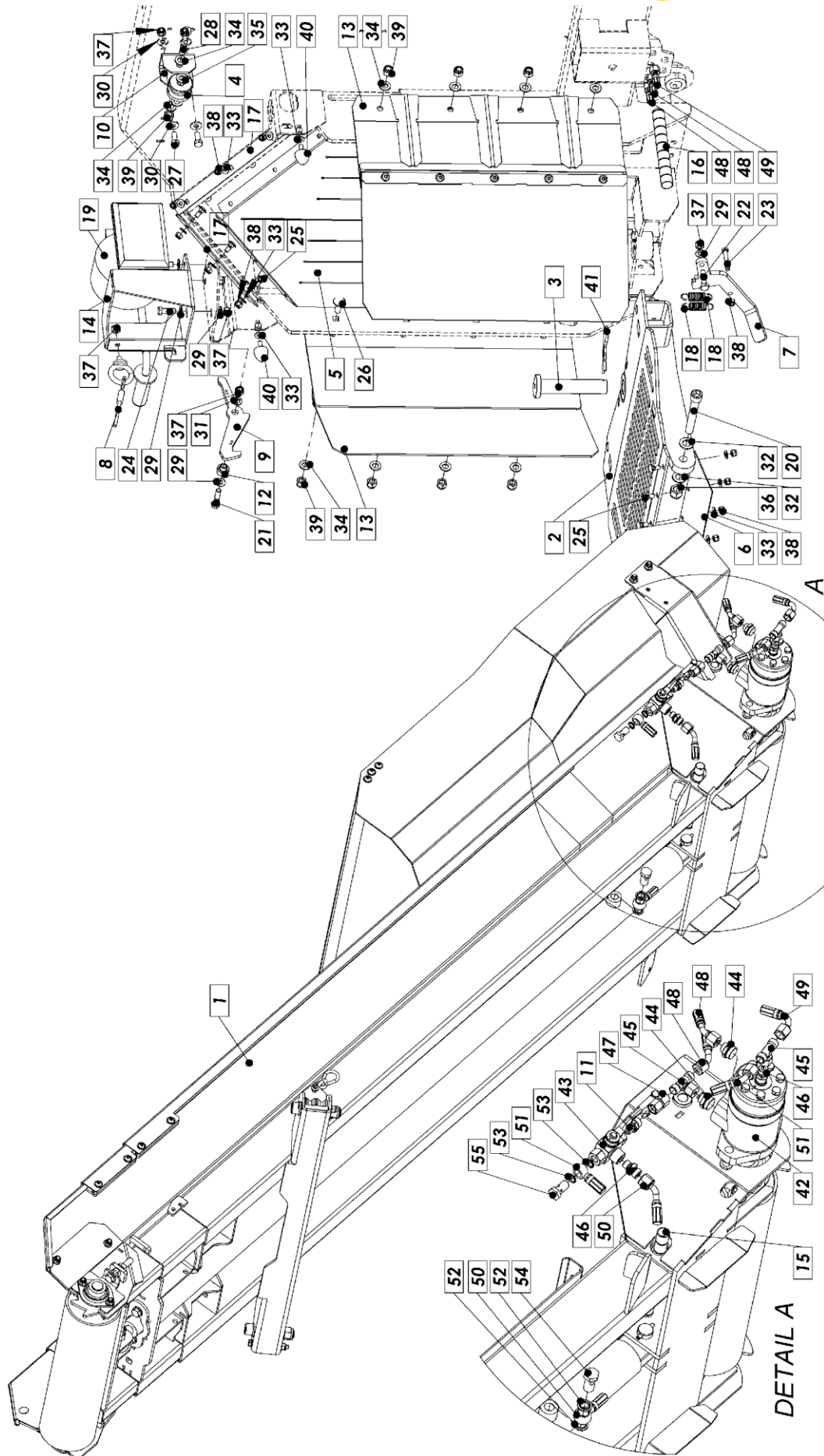


Figure 24: 900.05.210.B - Conveyor belt kpl.

Pos.	Name	No. of pieces	Number
1	Conveyor belt 450 5m kpl	1	900.05.215.B
2	Conveyor belt pivot	1	900.05.20.A
3	Bolt 30 / 50 - 155 Zn	1	900.05.12.0
4	Lift roller	1	900.05.51.0
5	Suspended plastic	1	900.05.60.0
6	Belt rubber	1	900.05.61.A
7	Sheet metal Zn	1	900.05.63.0
8	Conveyor rope 450 kpl	1	900.05.65.B
9	Conveyor interlock ZN	1	900.05.68.A
10	Pulley holder	1	900.05.71.0
11	CONNECTION HYD. .	1	900.05.80.0
12	Interlock pivot Zn	1	900.05.231.0
13	Splitting section extension kpl	2	900.05.240.0
14	Rope fixture var	1	900.05.260.0
15	Hyd. hose protection - spiral 20 mm x 500 mm	1	900.05.266.0
16	Hyd. hose protection - spiral 25 mm x 700 mm	1	900.05.267.0
17	Protective film holder	2	900.00.82.0
18	Compression spring	2	502.34.01.0
19	MANUAL WINCH	1	1013153
20	Hexagon screw M16x110	2	1000136
21	Screw M10x45 Zn	1	1000075
22	Screw M10x40 Zn	1	1012762
23	Screw M8x50 Zn	1	1012621
24	Screw M10x30 Zn	3	1000100
25	Screw M8 x 20 (K.V. 8.8)	11	1010560
26	Carriage screw M12 x 30	8	1014538
27	Screw M10x25 Zn	2	1000061
28	Screw M12x70	1	1001148
29	Washer M10 SKM	8	1000169
30	Washer M10 SKM	5	1000169
31	Washer M10 Zn	1	1003731
32	Washer M16	4	1000162
33	Washer M8 SKM	13	1009844
34	Washer M12 SKM	10	1000176
35	Washer M12 Zn	2	1000161
36	Nut M16 Zn	2	1000143
37	Nut M10 Zn	8	1003461
38	Nut M8 Zn	12	1003460
39	Nut M12 Zn	9	1000142
40	RUBBER ABSORBER TYPE DP 30_30 M8X23	2	1017043

41	PIN R 5x100 mm	1	1000217
42	Hydraulic motor MR 125	1	1020071
43	VALVE manual 3/2" GE5L DN6	1	1020566
44	CONNECTION HYD. GE10LR1/2EDOMD	2	1013624
45	CONNECTION HYD. ET10LOMD	2	1000734
46	CONNECTION HYD. GE10LREDDMD	2	1000643
47	CONNECTION HYD. . 10L-10L M-M	1	1021815
48	HOSE HYD. 1SN DN08 800 M-16L_M-45-16L	2	1021146
49	HOSE HYD. 1SN DN08 800M-16/M-90-16 (18)	1	1016132
50	HOSE HYD. 1SN DN08 550 B-3_8 M-45-16L	1	1021813
51	HOSE HYD. 1SN DN08 300 B1_4 M-45-16L	1	1021814
52	Washer hyd. USIT 17,28 / 23,8 - 2,03 (3/8")	2	1000659
53	HYD. SEALING WASHER 13.7x20x1.5 1/4 USIT	2	1003890
54	HOLLOW HYD. SCREW 3/8"	1	1000633
55	HOLLOW HYD. SCREW 1/4"	1	1003765

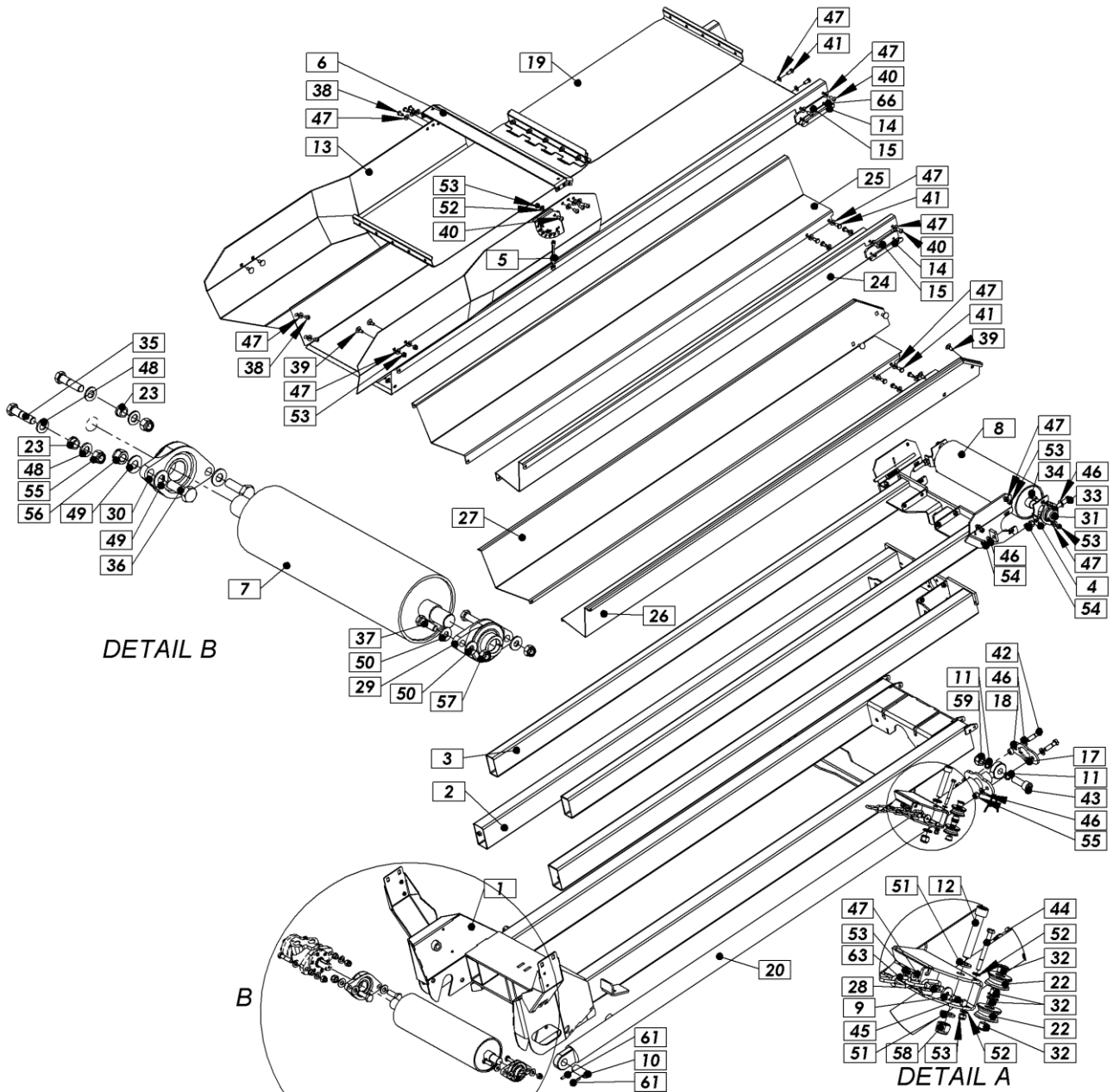


Figure 25: 900.05.215.B - Conveyor belt basic kpl

Pos.	Name	No. of pieces	Number
1	Frame 1	1	900.05.220.B
2	Frame 2	1	900.05.222.B
3	Frame 3	1	900.05.224.B
4	Engine tensioner	2	900.05.52.A
5	Indicator	1	900.05.62.A
6	Transverse connection	1	900.05.69.A
7	Drive roller var	1	900.05.115.B
8	Driven roller var	1	900.05.120.A
9	Washer 26 / 8,2 - 4 Zn	1	900.05.189.0
10	BOLT 25 X 62 ZN	1	900.05.217.0
11	Washer 20,5 / 28 - 3 Zn	2	900.05.219.0
12	Screw M16	2	900.05.218.0

13	Chute var	1	900.05.230.B
14	Guide underlay plate ZN	4	900.05.247.0
15	Guide underlay plate 2 ZN	4	900.05.248.0
16	Roller stopper bolt	1	900.05.253.0
17	BUSHING 12,3 / 20 - 8,5 ZN	2	900.05.254.0
18	Underlay plate ZN	1	900.05.255.0
19	Belt 450 5m kpl	1	900.05.900.A
20	Tandem cylinder 5m	1	900.06.85.A
21	COMPRESSION SPRING 15 X 1,2 - 50 ZN	1	910.03.159.0
22	Conveyor roller Zn	4	920.05.09.0
23	Bushing T 12 / 17 - 10 Zn	2	920.05.54.0
24	Chute 2	1	920.05.104.0
25	Chute 2 mirrored	1	920.05.105.0
26	Chute 3	1	920.05.106.0
27	Chute 3 mirrored	1	920.05.107.0
28	Chain spacer CIN	1	1001.03.49.0
29	BEARING PCFT 25	1	1018965
30	Bearing PCFT 35	1	1019252
31	Bearing RAT 25	2	1009761
32	Bushing FB1 16120 SFB	8	1000649
33	Screw M12x70 Zn	2	1001148
34	Carriage screw M8x25	4	1014436
35	Screw M12x50 Zn	2	1000072
36	Screw M14x45 Zn	2	1006749
37	Screw M10x35 Zn	2	1000112
38	Hexagon screw M8x16	10	1006450
39	Screw M8 x 20 (K.V. 8.8)	8	1010560
40	Screw M8x20 Zn	9	1005185
41	Screw M8x16 Zn	10	1000050
42	Screw M12x45 Zn	2	1000083
43	Screw M20 x 60 Zn Hexagon	1	1022918
44	Screw M8x80 Zn	2	1020719
45	Screw M8x30 Zn	1	1000073
46	Washer M12 SKM	8	1000176
47	Washer M8 SKM	41	1009844
48	Washer M12 Zn	4	1000161
49	Washer M14 SKM	4	1000154
50	Washer M10 SKM	4	1000169
51	Washer M16	4	1000162
52	Washer M8 Zn	5	1003465
53	Nut M8 Zn	16	1003460
54	Nut M12 Zn	6	1000139
55	Nut M12 Zn	4	1000142

56	Nut M14 Zn	2	1000146
57	Nut M10 Zn	2	1003461
58	Nut M16 Zn	2	1000143
59	Nut M20 ZN	1	1014383
60	PLUG PE 40X80/2	2	1005190
61	Spring pin 6x40	2	1000208
62	Spring pin 4x20	1	1000207
63	Chain D 6 x 43 Zn 1900 mm	1	1026481
64	Snap hook with nut 6x60mm	1	1004278
65	Bow shackle D8	1	1002961
66	Guide underlay plate 2 Zn	1	900.05.265.0

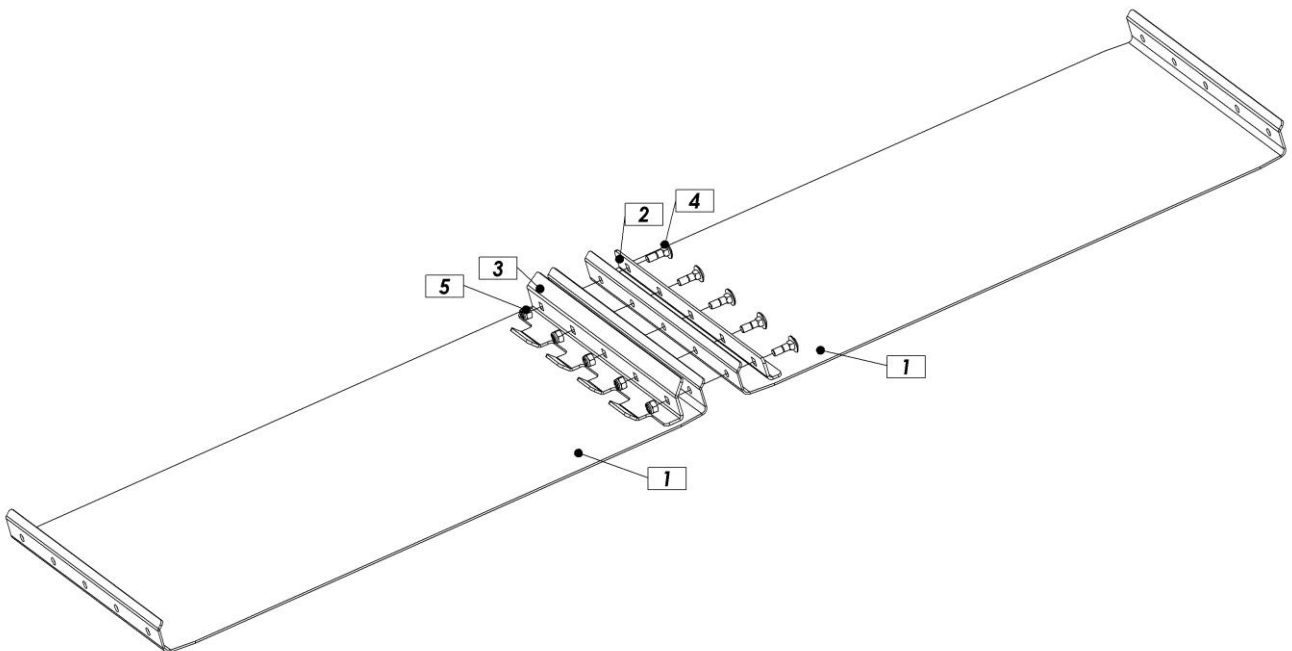


Figure26: 900.05.900.A - Belt kpl.

Pos.	Name	No. of pieces	Number
1	Conveyor segment 420	15	900.05.915.B
2	Conveyor profile 2 Zn	15	900.05.930.B
3	Conveyor profile 1 Zn	15	900.05.920.B
4	Carriage crew M8×25	75	1014436
5	Nut M8 Zn	75	1003460

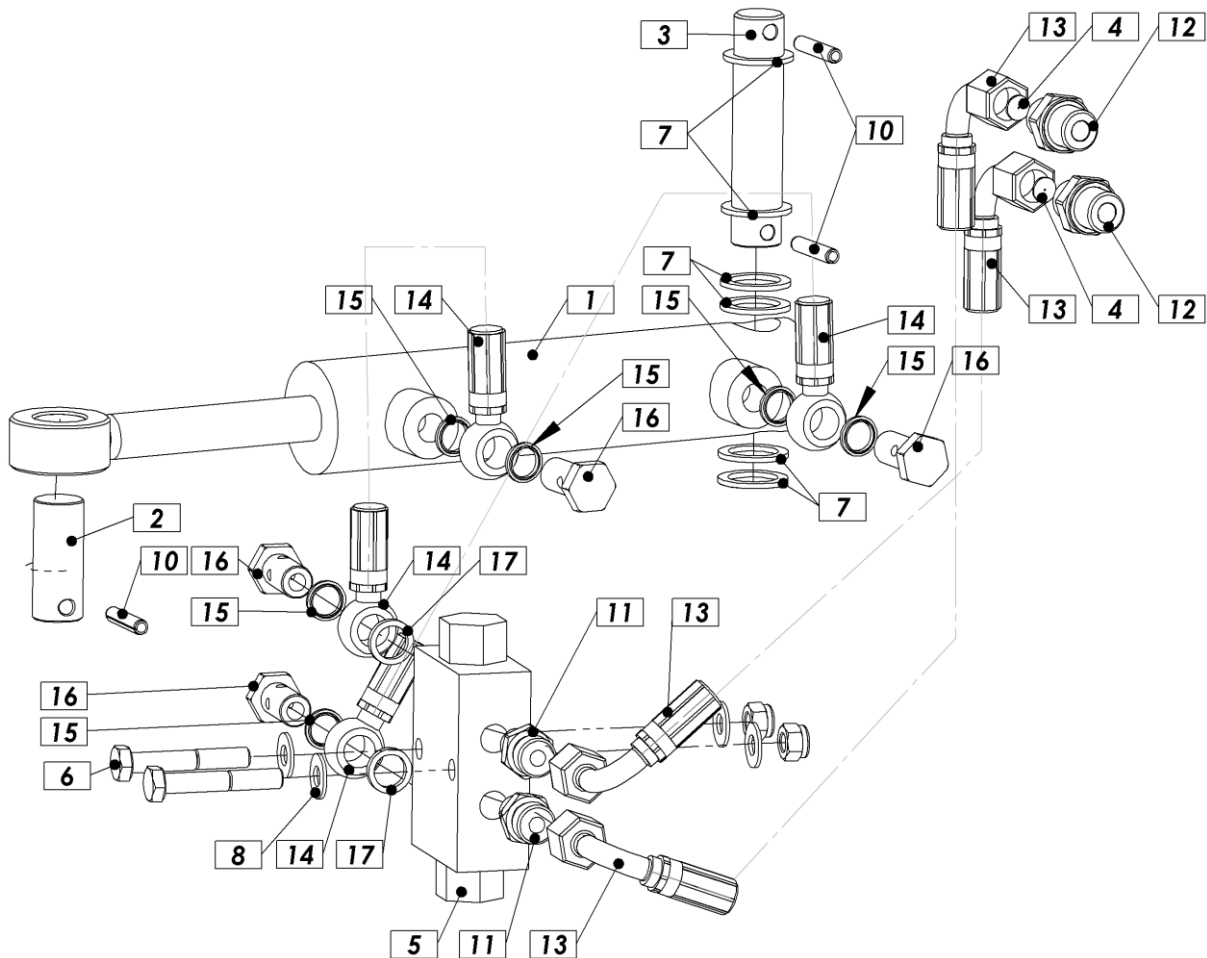


Figure 27: 900.05.75.A – Hydraulic conveyor belt offset

Pos.	Name	No. of pieces	Number
1	Plate roller	1	900.06.45.A
2	Belt offset cylinder bolt zn	1	910.05.98.A
3	Arm bolt1	1	900.03.119.0
4	Inductor 0,6	2	900.06.134.0
5	Block valve VBPDE G1/4"	1	1024033
6	Screw M8x50 Zn	2	1012621
7	Washer 20x28x2 Zn	6	1011909
8	Washer M8 SKM	4	1009844
9	Nut M8 Zn	2	1003460
10	Spring pin 6x30	3	1000214
11	CONNECTION HYD. GE10LREDOMD	2	1000643
12	CONNECTION HYD. GE10LR3/8EDOMD	2	1000639
13	HOSE HYD. 1SN DN08 2250 M-90-16_M-90-16	2	1021883
14	HOSE HYD. 1SN DN06 380B-1/4"/B1/4"	2	1000822
15	HYD. SEALING WASHER 13.7x20x1.5 1/4 USIT	6	1003890
16	HOLLOW HYD. SCREW 1/4"	4	1003765
17	Washer hyd. CU 13,4x18x3,0 (1/4")	2	1003803

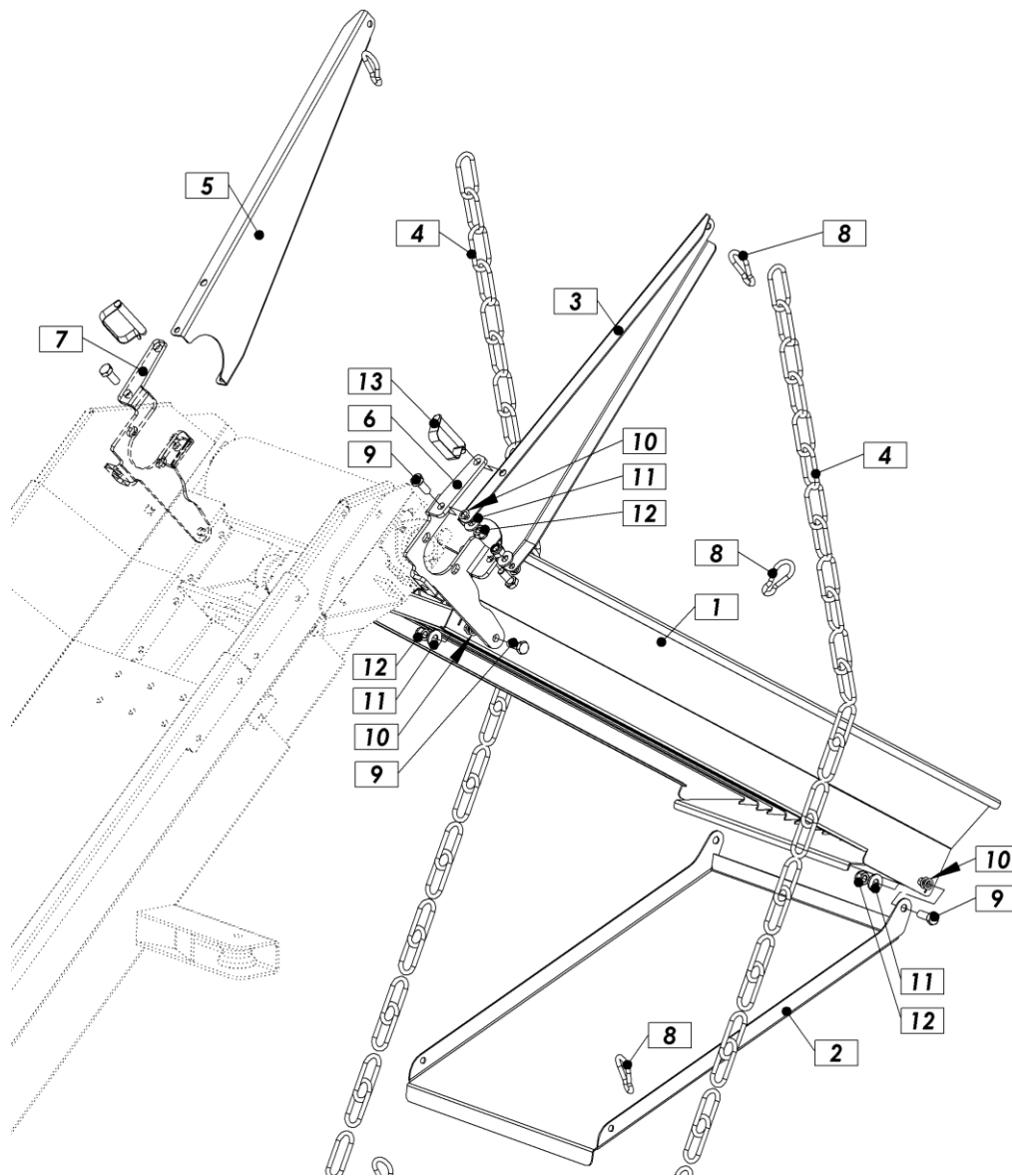


Figure 28: 900.05.510.A – Separator

Pos.	Name	No. of pieces	Number
1	Screen var	1	900.05.520.A
2	Disposal plate	1	900.05.511.A
3	Foldable bracket	1	900.05.512.A
4	Anchor chain	2	900.05.513.0
5	Turnable bracket	1	900.05.514.A
6	Tensioner with holder	1	900.05.516.0
7	Tensioner with holder	1	900.05.518.0
8	Snap hook with nut	6	1004278
9	Screw M10x25 Zn	8	1000061
10	Washer 10x16x0,5 Zn	16	1017065
11	Washer M10 SKM	8	1000169
12	Nut M10 Zn	8	1003461
13	Spring bolt 10/55	2	1000216

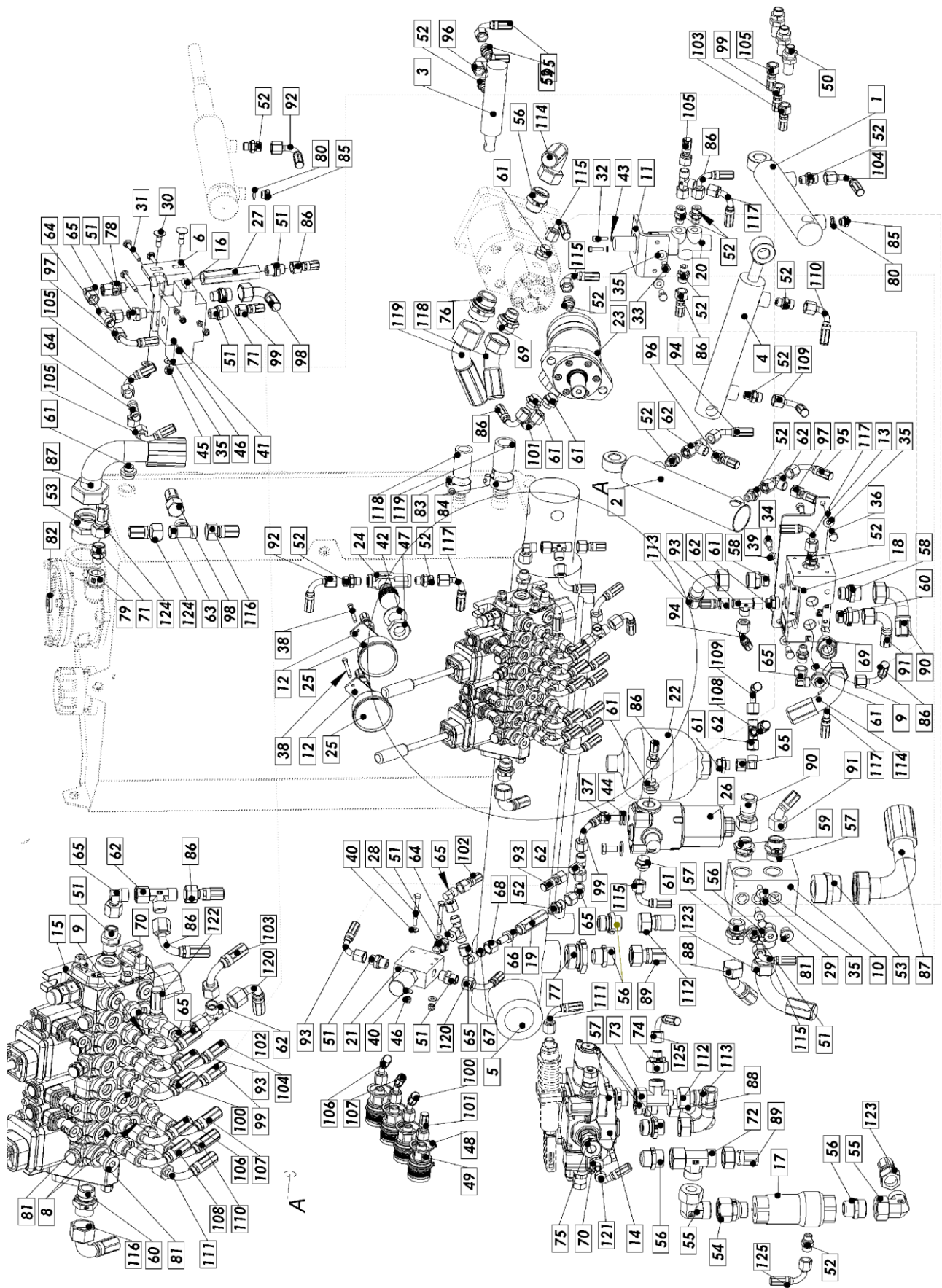


Figure 29: 900.06.00.A - Hydraulics kpl.

Pos.	Name	No. of pieces	Number
1	Plate roller	1	900.06.45.A
2	Lift mechanism roller	1	900.06.50.0
3	Plate roller	1	900.06.60.0
4	Lift mechanism roller	1	900.06.70.0
5	Splitting cylinder	1	900.06.75.0
6	Valve holder	1	900.06.110.A
7	Tank kpl	1	900.06.120.0
8	Inductor 1,5	2	900.06.131.0
9	Inductor 1,3	2	900.06.132.0
10	RETURN LINE BLOCK	1	900.06.140.0
11	Pilot valve holder	1	900.06.12.0
12	Pressure gauge plate Zn	2	900.06.13.0
13	Valve plate KS, door Zn	1	900.11.52.0
14	VALVE	1	1019433
15	Hydraulic manifold	1	1012370
16	VALVE WITH WHEEL	1	1012368
17	VALVE	1	1010537
18	VALVE	1	1020681
19	VALVE	1	1016169
20	VALVE	1	1021396
21	FLOW REGULATOR	1	1012713
22	HYD. ACCUMULATOR ADE075 (150bar)	1	1016193
23	Hydraulic motor MR 160	1	1011436
24	Inductor	1	1008961
25	Pressure gauge 63 0-250 bar glic 1/4-rear	2	1007005
26	Inter-pipe pressure filter G1/2	1	1024501
27	VALVE	1	1020525
28	Screw M6x55 Zn	2	1001077
29	Screw M8x85 Zn	2	1000087
30	Carriage screw M8x25	2	1014436
31	Carriage screw M6 x 55 Zn	3	1026981
32	Hexagon screw M5x20	2	1016431
33	Screw M8x16 Zn	2	1000050
34	Hexagon screw M8x20	2	1000107
35	Washer M8 SKM	8	1009844
36	Screw M8x20 Zn	2	1000051
37	Screw M10x20 Zn	3	1011900
38	Hexagon screw M5x50	4	1003849
39	Washer M8 SKZ	2	1000180
40	Washer M6 SKM	4	1000175
41	Washer M6 SKZ	3	1000187
42	Washer M22 Zn	1	1003468
43	Washer M5 Zn	2	1011359
44	Washer M10 SKM	3	1000169
45	Nut M8 Zn	2	1003460

46	Nut M6 Zn	5	1003712
47	Nut M22x1,5 Zn low	1	1000160
48	Retaining ring Z38x1.75	8	1000245
49	QUICK HYD. COUPLING 16X1,5 Z. F - DNP	4	1016191
50	HYD. BARRIER FITTING SV10LOMD	3	1016100
51	CONNECTION HYD. GE10LR3/8EDOMD	19	1000639
52	CONNECTION HYD. GE10LREDOMD	18	1000643
53	CONNECTION HYD. GE35LREDOMD	2	1016158
54	CONNECTION HYD. EGE22LRED	1	1020593
55	CONNECTION HYD. EVW22LOMD	2	1020219
56	CONNECTION HYD. GE22LREDOMD	5	1012697
57	CONNECTION HYD. GE18LR3/4EDOMD	6	1012474
58	CONNECTION HYD. GE18LREDOMD	2	1012469
59	CONNECTION HYD. GE15LR3/4EDOMD	1	1012472
60	CONNECTION HYD. GE15LREDOMD	2	1000722
61	CONNECTION HYD. GE10LR1/2EDOMD	9	1013624
62	CONNECTION HYD. EL10LOMD	8	1000743
63	CONNECTION HYD. T15L	1	1016219
64	CONNECTION HYD. ET10LOMD	3	1000734
65	CONNECTION HYD. EVW10LOMD	8	1000805
66	CONNECTION HYD. EVGE10LRED	1	1016168
67	PROFILE RING PSR10LX	1	1000850
68	HYD. NUT M10L	1	1000849
69	CONNECTION HYD. GE22LR1/2EDOMD	2	1013632
70	CONNECTION HYD. GE06LR3/8EDOMD	2	1016172
71	CONNECTION HYD. GE15LR3/8EDOMD	2	1014585
72	CONNECTION HYD. EL22LOMD	1	1020220
73	CONNECTION HYD. EL18LOMD	1	1014590
74	CONNECTION HYD. RED18/10LOMD	1	1020227
75	CONNECTION HYD. RI3/4EDX3/8	1	1020228
76	CONNECTION HYD. GE28LREDOMD	1	1016170
77	CONNECTION HYD. RI11/4EDX3/4	1	1021691
78	CONNECTION HYD. . EGE10LR3/8ED	1	1020797
79	CONNECTION HYD. RI1/2EDX3/8	1	1024370
80	Hyd. washer CU 13,4x18x1,5 (1/4")	2	1000599
81	HYD. PLUG VSTI3/8ED	5	1000778
82	HYD. PLUG VSTI3/4ED	1	1010563
83	HOSE CLAMP W2 29-31	1	1013390
84	HOSE CLAMP W2 34-37	1	1012694
85	VENT 1/4"	2	1016250
86	HOSE HYD. 1SN DN08 700M-16/M-90-16 (46)	4	1020226
87	HOSE HYD. 1SN DN31 1800 M-90-45/M-90-45 270* (1)	1	1014480
88	HOSE HYD. 1SN DN16 600M-45-26/M-45-26 (2)	1	1020225
89	HOSE HYD. GI280 DN19 700 M-30_M-30 (3)	1	1020222
90	HOSE HYD. 2SN DN16 610 M-26/M-90-26 (4)	1	1016121
91	HOSE HYD. 2SN DN12 560 M-90-22/M-45-22 180* (5)	1	1016122
92	HOSE HYD. 1SN DN08 2330M-90-16/M-90-16 270* (6)	1	1016123

93	HOSE HYD. 1SN DN08 400M-16/M-90-16 (7,13,36)	2	1016124
94	HOSE HYD. 1SN DN08 830M-45-16/M-45-16 270* (8)	1	1016125
95	HOSE HYD. 1SN DN06 1700 M-90-16/M-90-16 270* (9)	1	1016126
96	HOSE HYD. 1SN DN06 1700 M-16/M-90-16 (10)	1	1013969
97	HOSE HYD. 1SN DN08 1850 M-16/M-90-16	1	1016127
98	HOSE HYD. 1SN DN12 300 M-22/M-90-22 (14)	1	1016129
99	HOSE HYD. 1SN DN08 2300M-16/M-90-16 (15,39)	2	1016150
100	HOSE HYD. 1SN DN08 1600M-90-16/M-45-16 270* (16)	1	1016130
101	HOSE HYD. 1SN DN08 1250 M-16/M-90-16 (17)	1	1016131
102	HOSE HYD. 1SN DN08 800M-16/M-90-16 (18)	1	1016132
103	HOSE HYD. 1SN DN08 2250 M-16/M-90-16 (19)	1	1014136
104	HOSE HYD. 1SN DN08 1150M-90-16/M-90-16 180* (20)	1	1016133
105	HOSE HYD. 1SN DN08 2650 M-16/M-90-16 (21,22)	2	1016134
106	HOSE HYD. 1SN DN08 1650 M-90-16/M-45-16 270* (23)	1	1016135
107	HOSE HYD. 1SN DN08 1550 M-90-16/M-45-16 270* (24)	1	1016136
108	HOSE HYD. 1SN DN08 450 M-16/M-90-16 (25)	1	1016137
109	HOSE HYD. 1SN DN08 670M-90-16L_M-90-16_180° (26)	1	1016138
110	HOSE HYD. 1SN DN08 1030M-90-16/M-90-16 90* (27)	1	1016139
111	HOSE HYD. 1SN DN08 500 M-90-16/M-90-16 (28)	1	1016140
112	HOSE HYD. GI280 DN16 730M-26/M-26 (29)	1	1016142
113	HOSE HYD. GI280 DN16 900 M-90-26_M-90-26 (30)	1	1020224
114	HOSE HYD. GI280 DN19 1500M-90-30/M-90-30 270* (31)	1	1016143
115	HOSE HYD. 1SN DN08 1650 M-90-16/M-90-16 (32)	2	1016144
116	HOSE HYD. 1SN DN12 1900 M-22/M-90-22 (33)	1	1016145
117	HOSE HYD. 1SN DN08 650 M-90-16_M-90-16 (47)	2	1016157
118	HOSE HYD. SAE100 DN19 320 M-45-30L (37)	1	1016148
119	HOSE HYD. SAE100 DN25 290 M-45-36L (38)	1	1016149
120	HOSE HYD. 1SN DN08 650 M-90-16/M-90-16 (40)	1	1016151
121	HOSE HYD. TS8 DN05 1500MAN-1/4"/M-90-12 (41)	1	1016152
122	HOSE HYD. TS8 DN05 650MAN-1/4"/M-90-12 (42)	1	1016153
123	HOSE HYD. 1SN DN19 600 M-30/M-90-30 (43)	1	1016154
124	HOSE HYD. 1SN DN12 320 M-22/M-22 (44)	1	1016155
125	HOSE HYD. 1SN DN08 400M-90-16/M-90-16 180* (45)	1	1016156

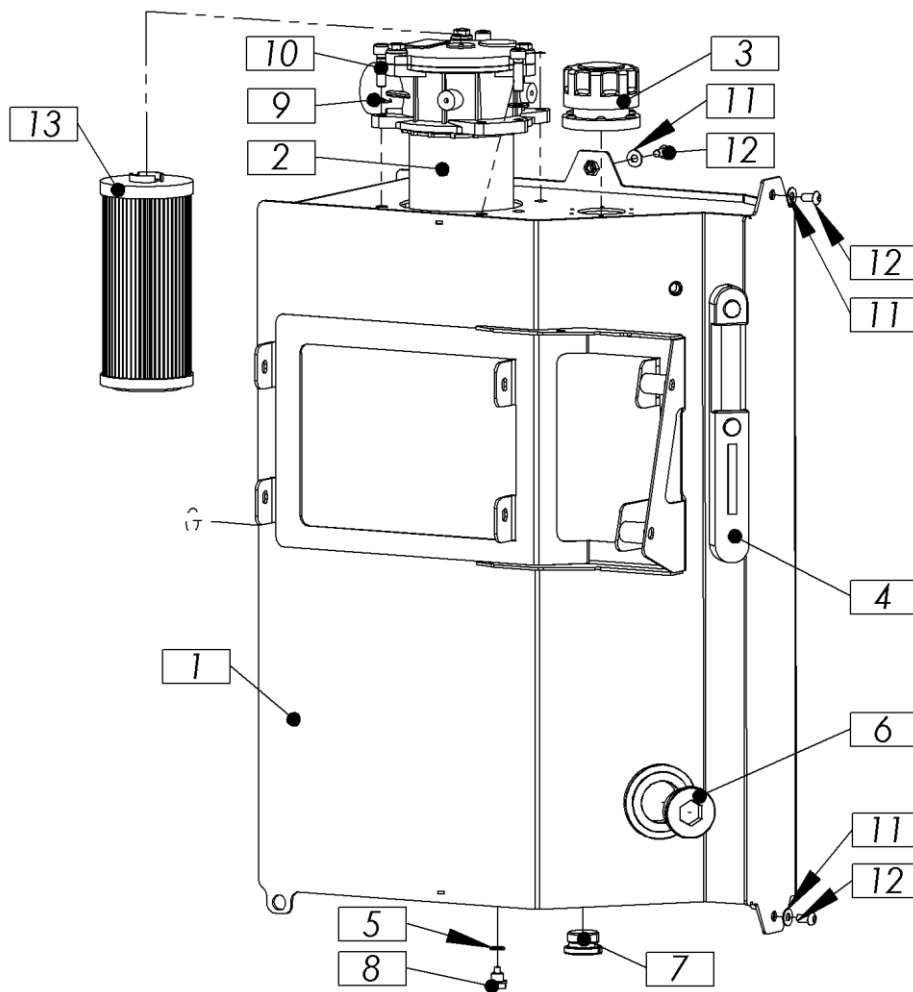


Figure 30: 900.06.120.0 - Tank TITAN 40/20 kpl.

Pos.	Name	No. of pieces	Number
1	Tank	1	900.06.125.0
2	Return filter	1	1012371
3	Funnel oil	1	1012364
4	INDICATOR OIL	1	1012365
5	HYD. WASHER Sealing 13.7x20x1.5 1/4 USIT	1	1003890
6	HYD. PLUG VSTI11/2ED	1	1017046
7	HYD. PLUG VSTI1ED	1	1021663
8	Plug hyd. VSTI1/4ED MAGNET	1	1012373
9	Washer M10 SKM	3	1000169
10	Hex cap socket screw M10x35	3	1016188
11	Washer M8 SKM	4	1009844
12	Hex cap socket screw M8x16	4	1006450
13	Filter insert	1	1012372

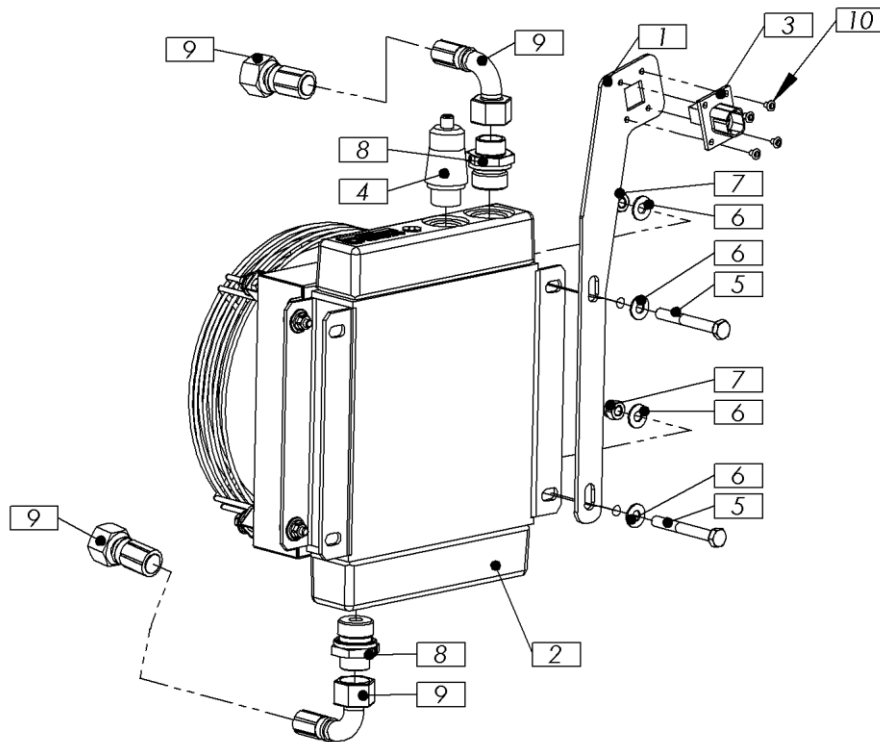


Figure 31: 900.06.150.0 / 900.06.160.0 - Cooler kpl.

Pos.	Name	No. of pieces	Number	
			220 V 900.06.150.0	12 V 900.06.160.0
	Cooler kpl.			
1	El. connector holder	1	/	900.12.31.0
2	COOLER	1	1012353	1012363
3	Connector	1	/	1023493
4	Thermostat	1	1012354	1012354
5	Screw M8x65 Zn	2	1018818	1018818
6	Washer M8 SKM	4	1009844	1009844
7	Nut M8 Zn	2	1003460	1003460
8	CONNECTION HYD. GE15LR3/4EDOMD	2	1012472	1012472
9	HOSE HYD. 1SN DN12 950 M-90- 22/M-22 (48)	2	1013966	1013966
10	Rivet	4	/	1003685

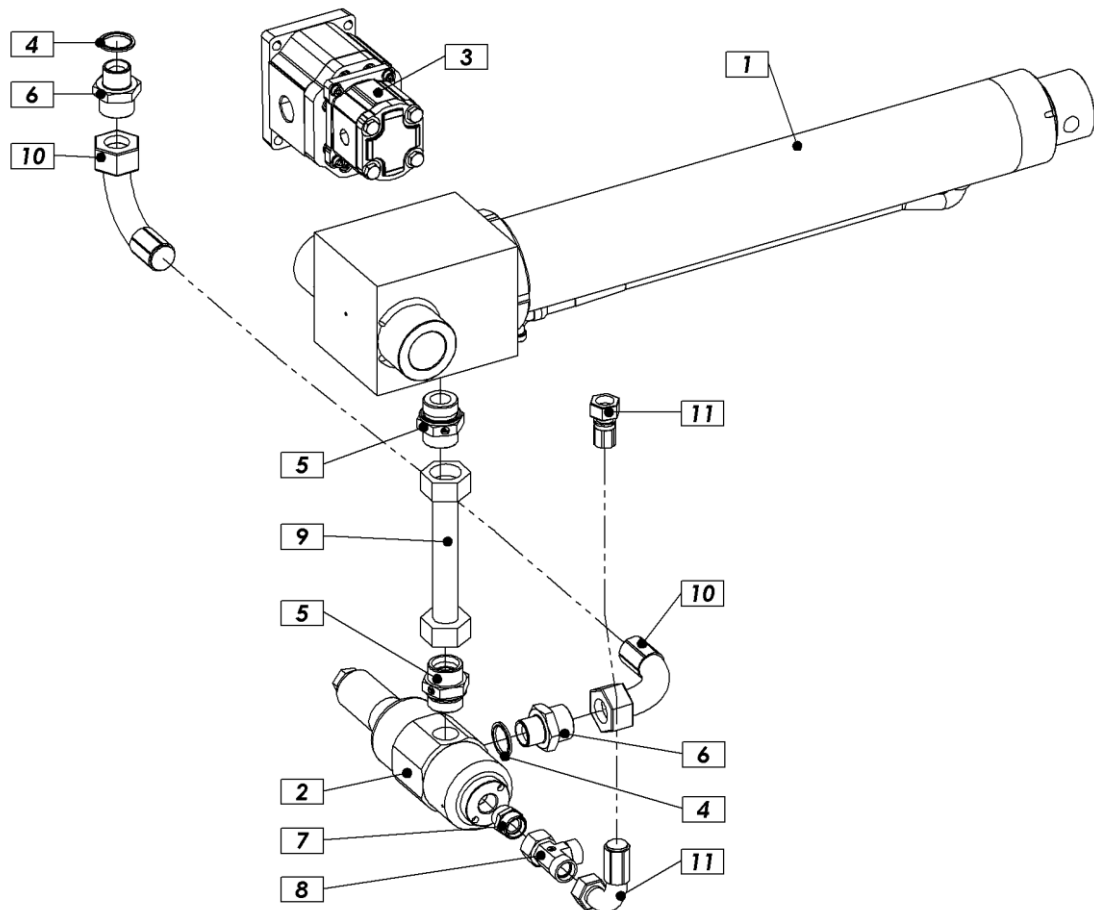


Figure 24: 900.06.310.0 – Boom speed

Pos.	Name	No. of pieces	Number
1	Dual speed hydraulic cylinder	1	900.06.220.0
2	Fill valve	1	1022966
3	Tandem gear pump	1	1022967
4	WASHER HYD. USIT 33,89X42,8X2,5	2	1012465
5	CONNECTION HYD. GE30SREDOMD	2	1016159
6	CONNECTION HYD. 20-16HMK4	2	1012463
7	CONNECTION HYD. GE22LREDOMD	1	1012697
8	CONNECTION HYD. EL22LOMD	1	1020220
9	Metal hyd. hose 30X3 L200 M30S_M30S	1	1022914
10	HOSE HYD.1SN DN32 950 A-90-5/4_A-90-5/4 90°	1	1022470
11	HOSE HYD. 2SN DN19 400 M-90-30_M-30	1	1022910

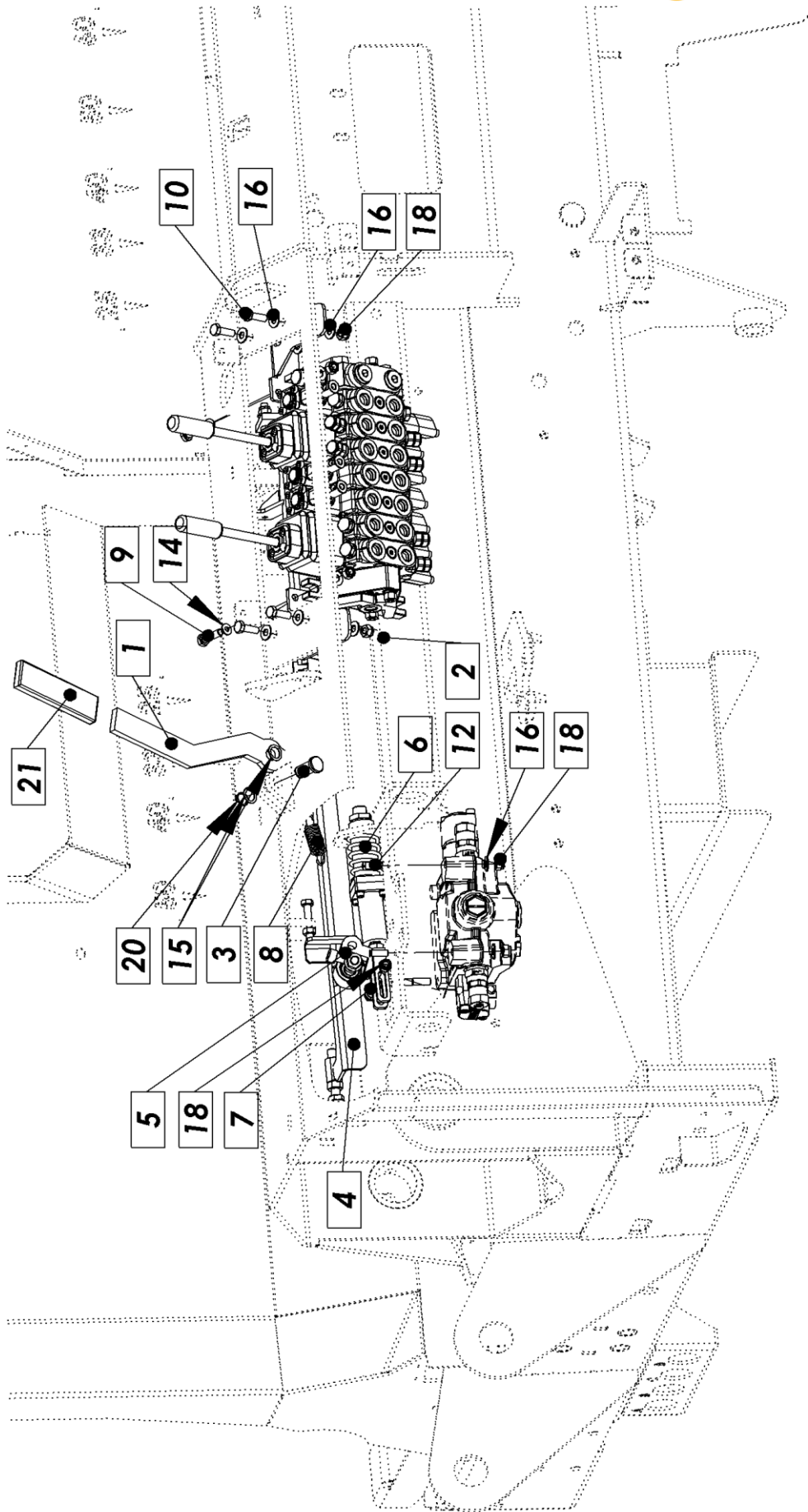


Figure 33: 900.11.00.A - Mechanisms kpl.

Pos.	Name	No. of pieces	Number
1	Emergency movement lever	1	900.11.17.0
2	Valve holder	1	900.11.18.A
3	Bolt 14 / 20 - 34,2 ZN	1	900.11.62.0
4	Mechanism kpl	1	900.11.100.0
5	Eye	1	900.11.123.0
6	Cylinder	1	900.11.130.0
7	Screw M8 Zn	1	900.11.143.0
8	Compression spring	1	502.34.01.0
9	Screw M8x30 Zn	4	1000073
10	Screw M8x25 Zn	4	1000052
11	Screw M8x45 Zn	1	1012046
12	Screw M8x60 Zn	3	1012206
13	Hexagon screw M10x16	1	1000088
14	Washer M6 SKM	4	1000175
15	Washer 14x20x1 Zn	2	1000043
16	Washer M8 SKM	15	1009844
17	Washer M10 SKZ	1	1018775
18	Nut M8 Zn	12	1003460
19	Nut M8 Zn	1	1003735
20	Retaining ring Z14x1	1	1010642
21	Handle rubber	1	1001165

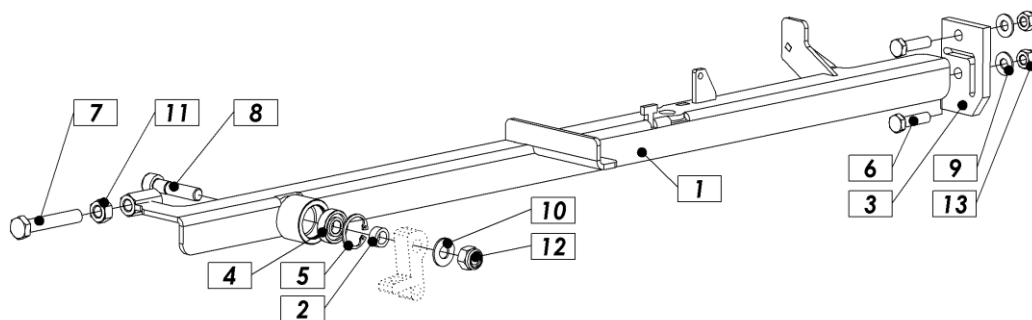


Figure 34: 900.11.100.0 – Piston mechanism

Pos.	Name	No. of pieces	Number
1	Mechanism var.	1	900.11.110.0
2	BUSHING 10 / 15 - 7 ZN.	1	900.11.121.0
3	Guide	1	900.11.122.0
4	BEARING 6000 2RS	1	1017030
5	Retaining ring N26x1.2	1	1000269
6	Screw M8x30 Zn	2	1009443
7	Screw M10x60 Zn	1	1000054
8	Hexagon socket screw M10x45	1	1019923
9	Washer M8 SKM	2	1009844
10	Washer M10 SKM	1	1000169
11	Nut M10 Zn	1	1003706
12	Nut M10 Zn	1	1003461
13	Nut M8 Zn	2	1003460

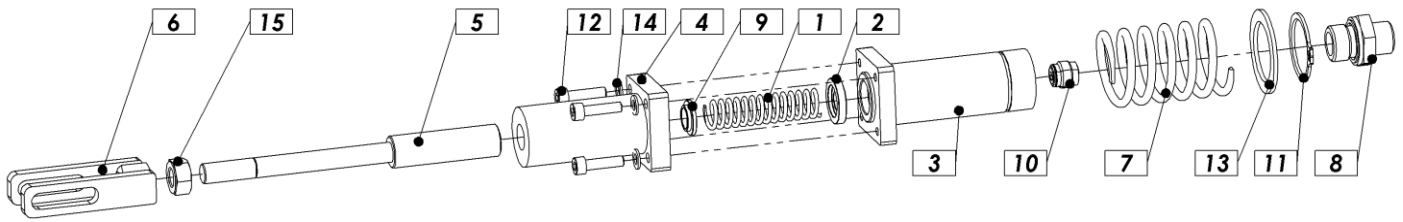


Figure 35: 900.11.130.0 – Valve cylinder kpl.

Pos.	Name	no. of pieces	Number
1	Spring 1,9x14x73	1	900.11.76.0
2	Washer 10x23x4	1	900.11.77.0
3	Roller	1	900.11.131.0
4	Roller	1	900.11.132.0
5	Piston rod	1	900.11.133.0
6	Fork var	1	900.11.135.0
7	COMPRESSION SPRING 35 X 4 - 63 ZN	1	900.11.138.0
8	CONNECTION HYD. GE10LM18X1,5EDOMD	1	910.11.139.0
9	Bushing T 10,3 / 17,5 - 4	1	900.11.142.0
10	NON-RETURN VALVE	1	1012728
11	Retaining ring Z30x1.5	1	1000270
12	Hexagon screw M5x20	4	1016431
13	Washer 30x42x2 Zn	1	1000516
14	Washer M5 Zn	4	1011359
15	Nut M10 Zn	1	1003706

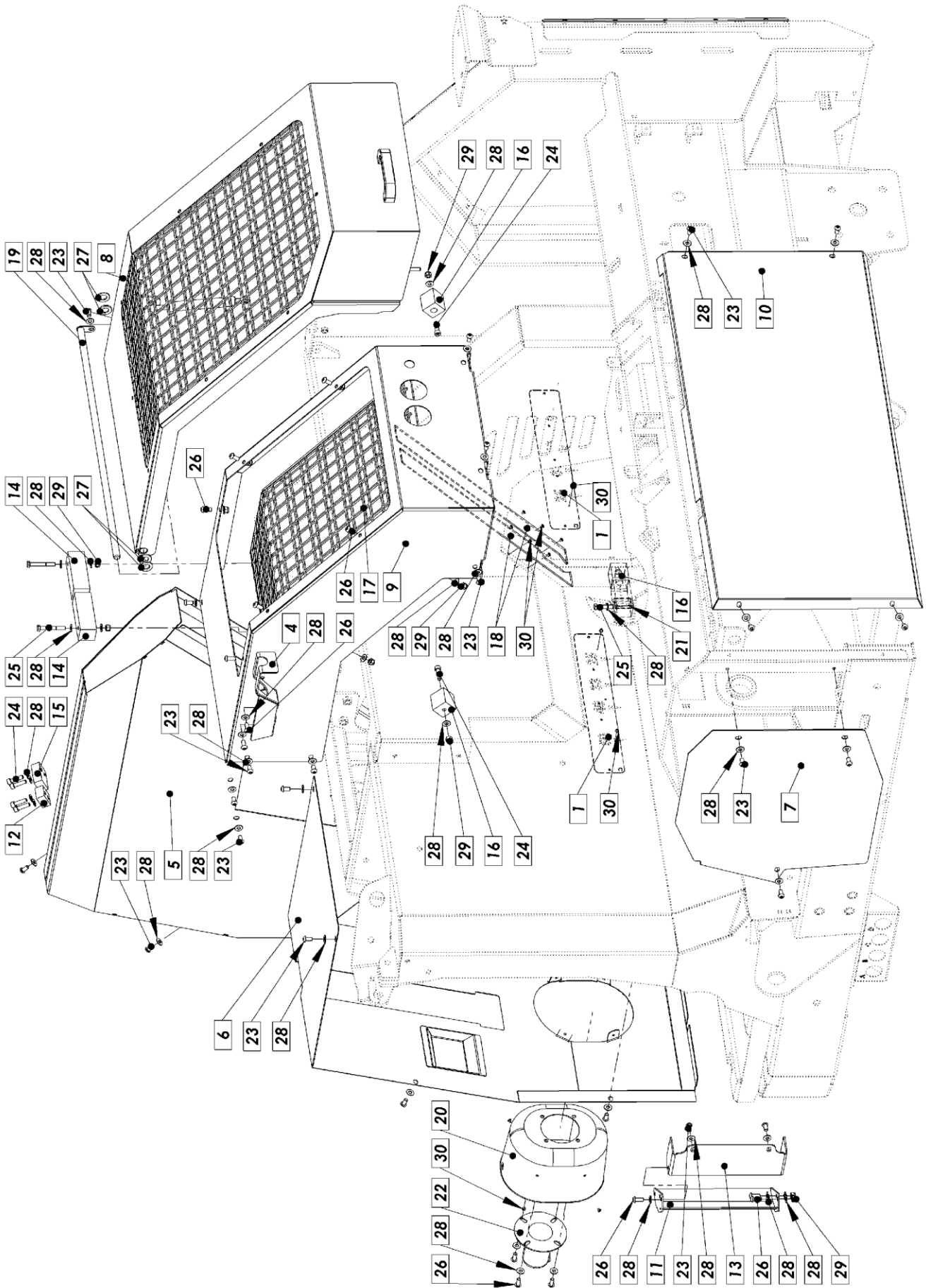


Figure 36: 900.08.00.0 - Protective covers (basic)

Pos.	Name	No. of pieces	Number
1	Number background	2	900.00.80.0
2	Side plastic holder	1	900.00.81.0
3	Protect film holder	1	900.00.82.0
4	Pick axe holder	1	900.00.111.0
5	Saw cover VAR	1	900.08.10.0
6	Arm cover VAR	1	900.08.45.0
7	Cylinder protection	1	900.08.61.0
8	Cover front D	1	900.08.70.0
9	Cover front L	1	900.08.80.0
10	Cover front	1	900.08.96.0
11	Sawdust guide	1	900.08.105.0
12	Limiter	1	900.08.109.0
13	Guide bracket	1	900.08.110.0
14	Limiter CS	2	900.08.111.0
15	Limiter	1	900.08.112.0
16	Limiter CS	3	900.08.114.0
17	Protective screen L	1	900.08.115.0
18	Protection	2	900.08.117.0
19	Protective cover dowel pin	1	900.11.74.0
20	PTO drive shaft protection RC	1	900.08.04.0
21	Limiter	1	900.08.146.0
22	Pto drive shaft protection with flange	1	1015006
23	Hex cap socket screw M8x16	29	1006450
24	Hex cap socket screw M8x30	7	1009443
25	Screw M8x60 Zn	3	1012206
26	Screw M8x20 Zn	15	1005185
27	Washer M16	4	1000162
28	Washer M8 SKM	60	1009844
29	Nut M8 Zn	16	1003460
30	Rivet	31	1003685

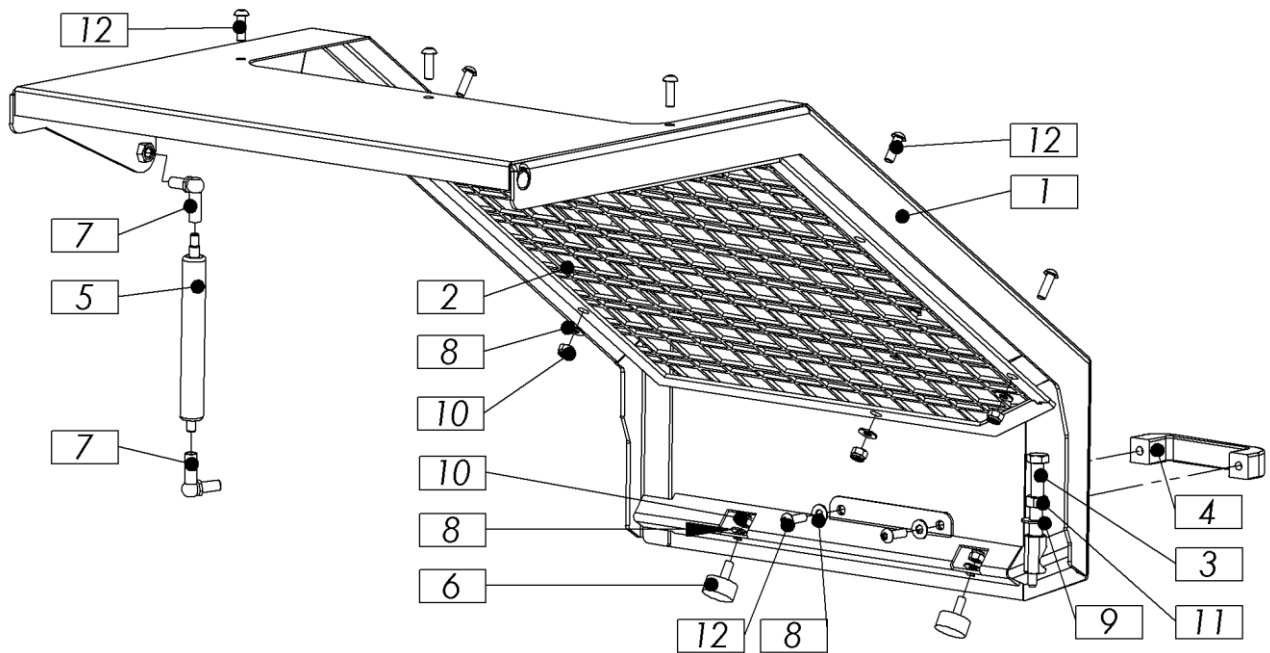


Figure 37: 900.08.70 - Front right cover

Pos.	Name	No. of pieces	Number
1	Front cover D	1	900.08.87.0
2	Screen var front D	1	900.08.79.0
3	Screw M12x120 Zn	1	900.08.126.0
4	Plastic knob M8 117 mm	1	1014737
5	Gas damper 600N L=260	1	1009755
6	RUBBER DAMPER TYPE D 30_15 M8X20	2	1011799
7	Ball joint M10 - M10	2	1008832
8	Washer M8 SKM	12	1009844
9	Washer M12 SKM	1	1000176
10	Nut M8 Zn	10	1003460
11	Nut M12 Zn	1	1000139
12	Hexagon socket screw M8x25	10	1010586

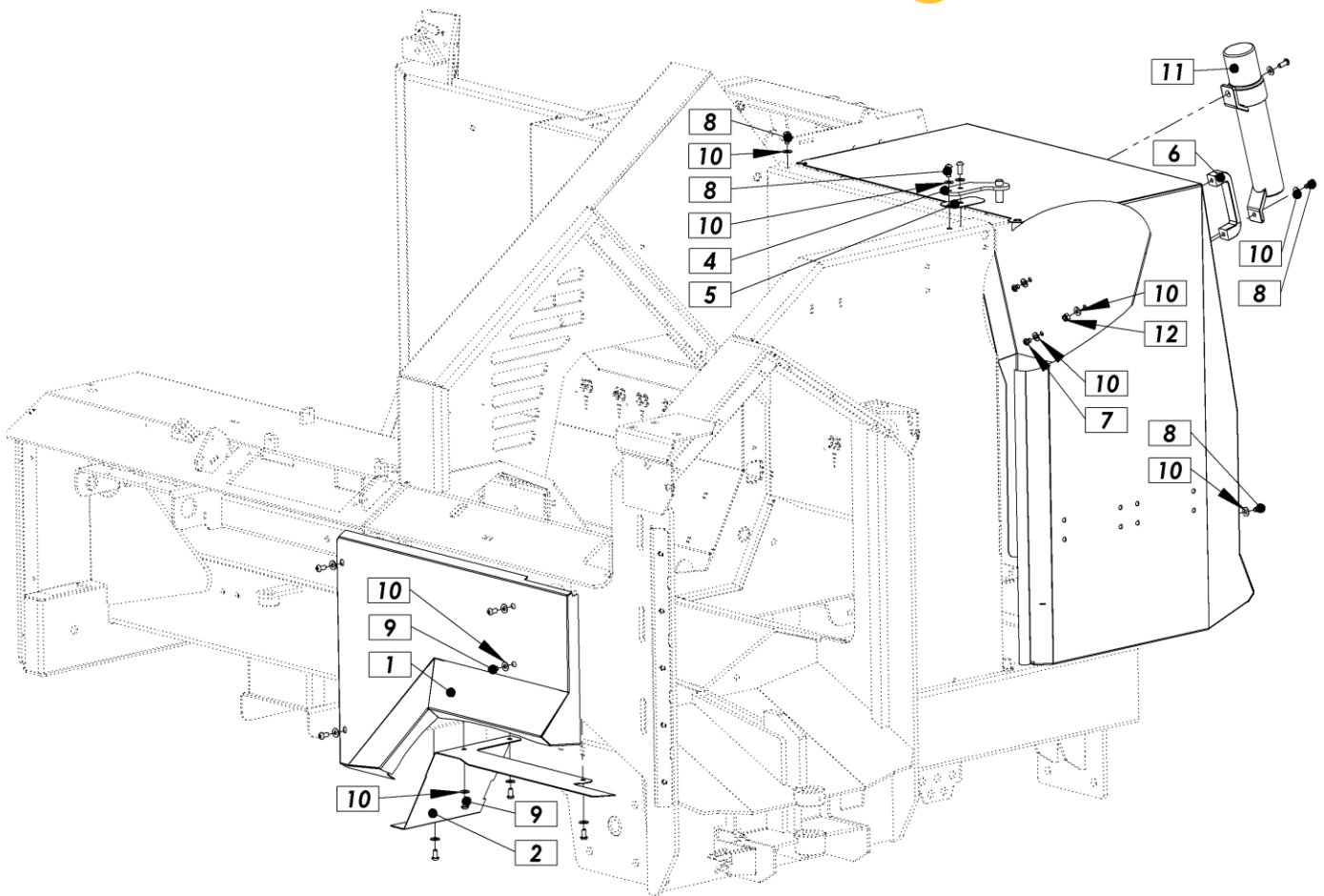


Figure 38: 900.08.200.0 / 900.08.300.0 Protective covers (additional)

Pos.	Name	No. of pieces	Number	
			Model without wheels 900.08.200.0	Model with wheels 900.08.300.0
	Protective covers (additional)			
1	Cover front mudguard	1	900.08.121.0	900.08.93.0
2	Protection under mudguard	1	/	900.08.97.0
3	Rear mudguard cover	1	900.08.125.0	900.08.25.0
4	Axle with bracket	1	900.08.100.0	900.08.100.0
5	Spacing plate Zn	1	900.08.108.0	900.08.108.0
6	Plastic knob M8 117 mm	1	1014737	1014737
7	Screw M8x10 Zn	2	1010646	1010646
8	Screw M8x20 Zn	6	1005185	1005185
9	Hex cap socket screw M8x16	8	1006450	1006450
10	Washer M8 SKM	14	1009844	1009844
11	Document storage tube	1	1021742	1021742
12	Nut M8 Zn	2	1003460	1003460

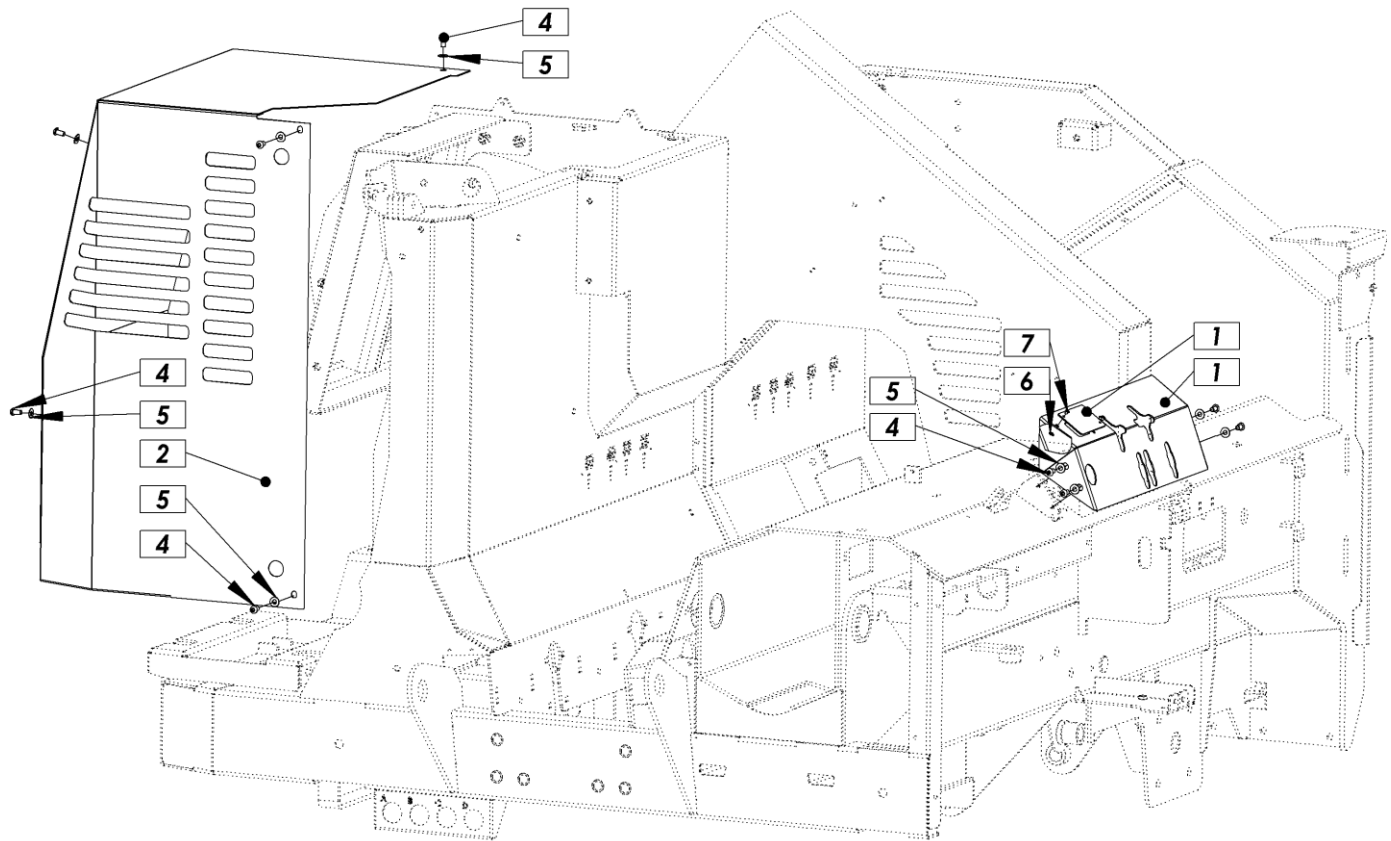


Figure 39: 900.08.400.0 - Protective covers (PTO model)

Pos.	Name	No. of pieces	Number
1	Control box cover	1	900.08.89.B
2	Cover rear corner	1	900.08.90.0
3	El. cut cover	1	900.08.15.0
4	Hexagon socket screw M8x16	9	1006450
5	Washer M8 SKM	9	1009844
6	Washer M5 Zn	2	1011359
7	Rivet	2	1003685

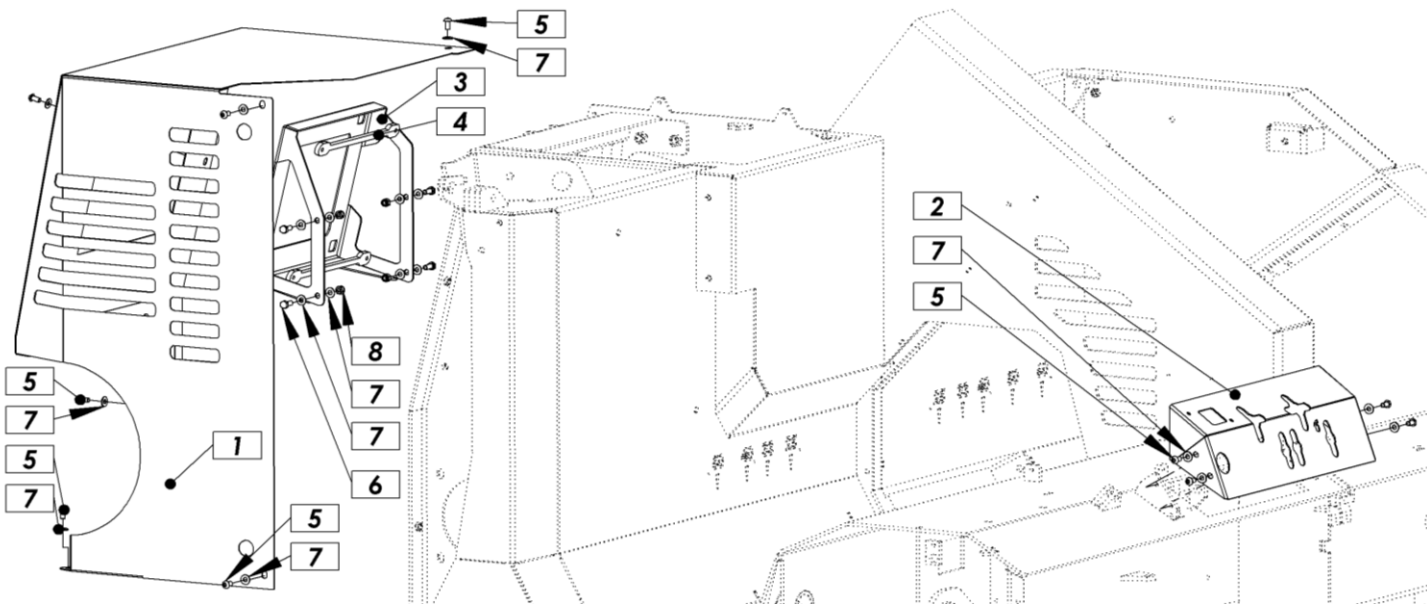


Figure 40: 900.08.500.0 - Protective covers (elect. motor)

Pos.	Name	No. of pieces	Number
1	Cover rear corner	1	900.08.140.0
2	Command cover platform EL	1	900.08.89.B
3	Box attachment	1	900.12.11.B
4	Nut double el. box	2	900.12.15.0
5	Hex cap socket screw M8x16	9	1006450
6	Screw M8x20 Zn	4	1000051
7	Washer M8 SKM	17	1009844
8	Nut M8 Zn	4	1003460

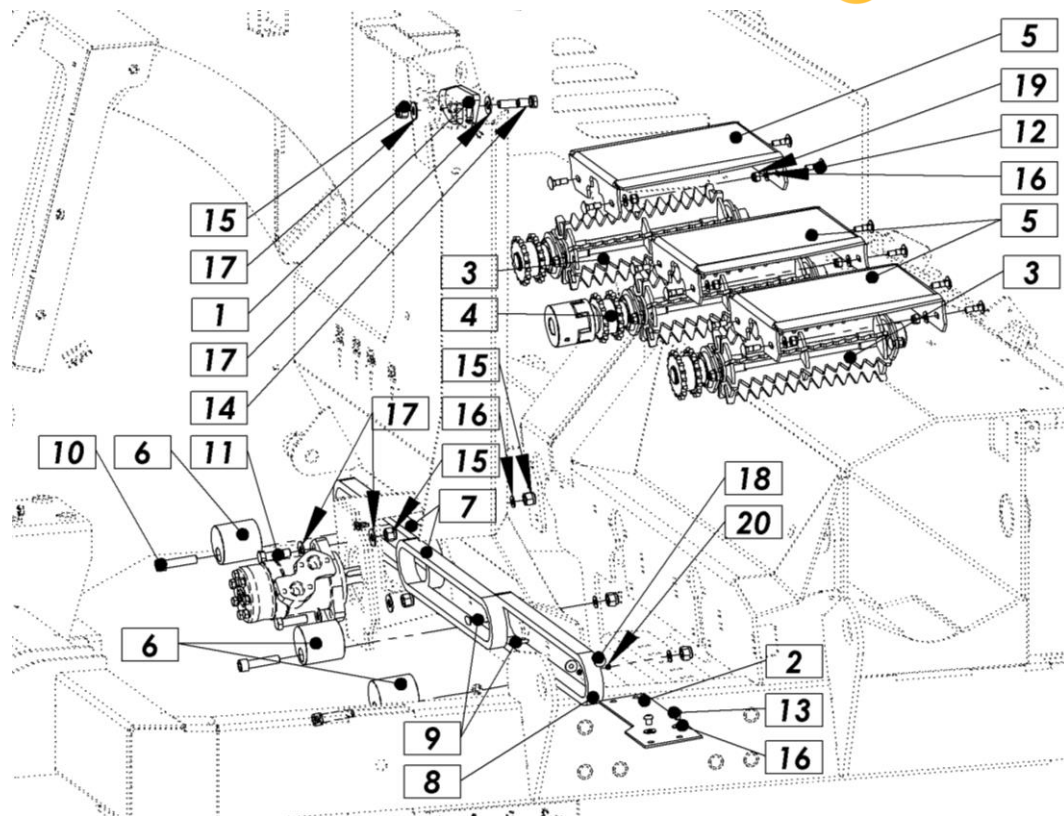


Figure 41: 900.09.00.0 - Bottom drive kpl.

Pos.	Name	No. of pieces	Number
1	Lift table lock	1	900.04.194.0
2	Chain protection	1	900.08.118.0
3	Roller	2	900.09.10.0
4	Roller drive	1	900.09.20.0
5	Table panel	3	900.09.31.0
6	Tensioner	3	900.09.44.A
7	Chain RK 08 B-1 (Lange 75 x 12,7 = 952.5)	2	1014420
8	Chain RK 08 B-1 (Lange 77 x 12,7 = 977.9)	1	1014421
9	Joint link SG 08-1	3	1010675
10	Hex cap socket screw M12x50	3	1000124
11	Screw M12x40 Zn	2	1000059
12	Screw M8x25 carriage	12	1014436
13	Screw M8x10 Zn	2	1010646
14	Screw M12x50 Zn	1	1000072
15	Nut M12 Zn	6	1000142
16	Washer M8 SKM	19	1009844
17	Washer M12 SKM	6	1000176
18	Washer M6 Zn	2	1000173
19	Nut M8 Zn	12	1003460
20	Rivet	2	1003685

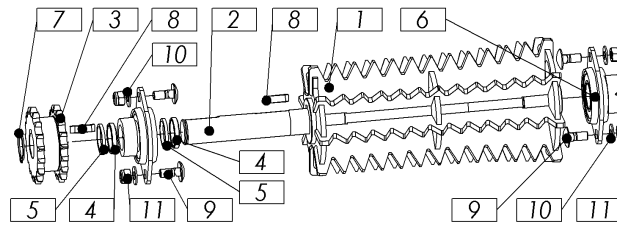


Figure 42: 900.09.10.0 - Roller kpl.

Pos.	Name	No. of pieces	Number
1	Roller	1	900.09.15.0
2	Roller shaft	1	900.09.23.0
3	Gear wheel Z=17 08B-2	1	900.09.36.0
4	Washer 25,5 x 30 x 5	3	900.09.41.0
5	Washer 25,5 x 30 x 3	2	900.09.47.0
6	Bearing RAT 25	2	1009761
7	Retaining ring Z25x1.2	1	1004716
8	Dowel 8x7x25 A	2	1011280
9	Screw M8x20 carriage	4	1010560
10	Washer M8 SKM	4	1009844
11	Nut M8 Zn	4	1003460

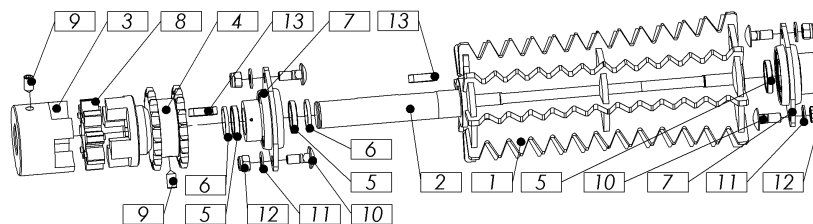


Figure 43: 900.09.20.0 - Drive roller kpl.

Pos.	Name	No. of pieces	Number
1	Roller	1	900.09.15.0
2	Roller shaft	1	900.09.23.0
3	Clutch 28	1	900.09.39.0
4	Gear wheel with clutch	1	900.09.40.0
5	Washer 25,5 x 30 x 5	3	900.09.41.0
6	Washer 25,5 x 30 x 3	2	900.09.47.0
7	Bearing RAT 25	2	1009761
8	Elastic clutch insert	1	1012484
9	Threaded pin M8x16	2	1000071
10	Screw M8x20 carriage	5	1010560
11	Washer M8 SKM	5	1009844
12	Nut M8 Zn	5	1003460
13	DOWEL 8x7x25 A	2	1011280

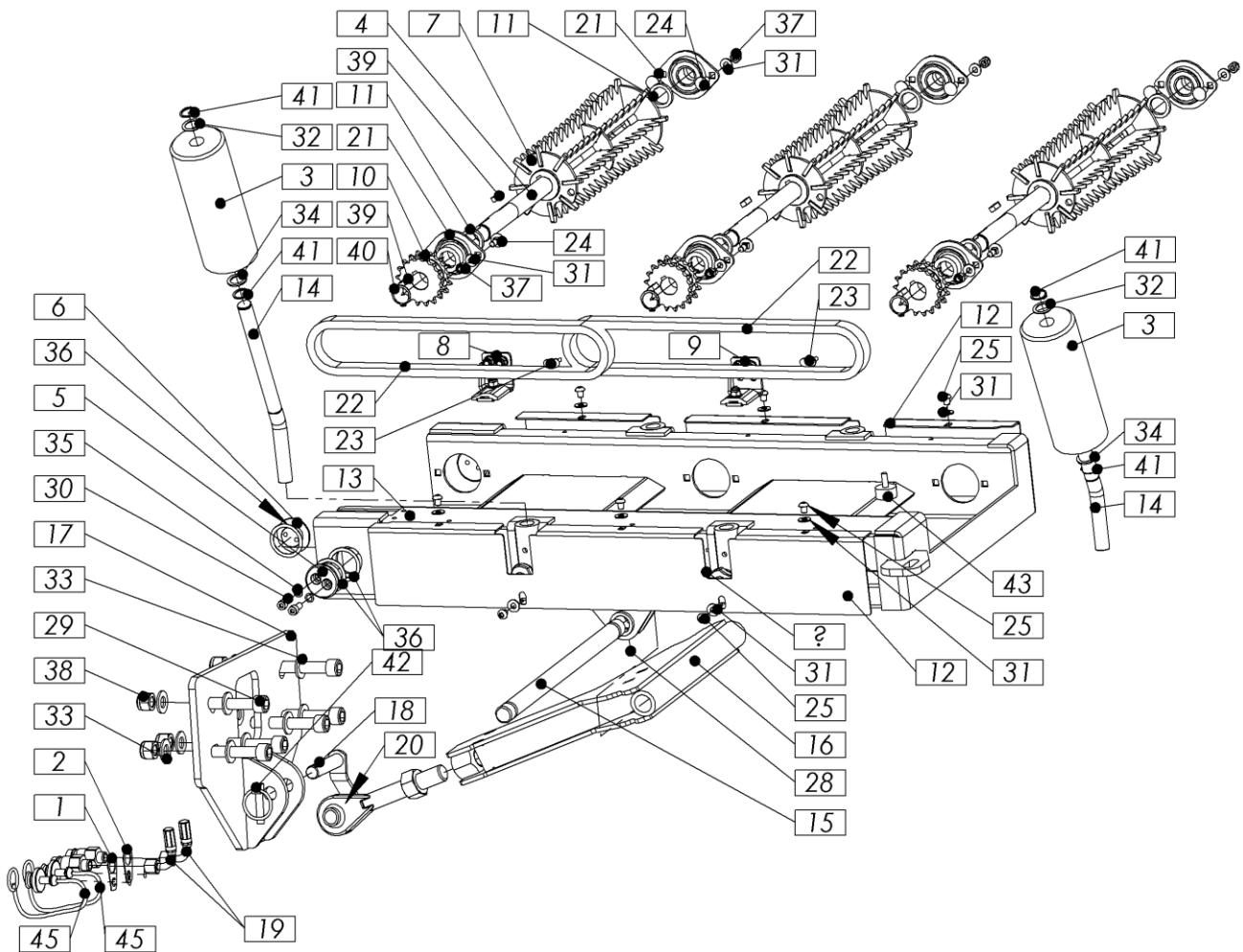


Figure 44: 900.09.100.0 Table short (RC without wheels)

Pos.	Name	No. of pieces	Number
1	Hose marking C	1	900.00.73.0
2	Hose marking A	1	900.00.74.0
3	Plastic roller	2	900.04.81.0
4	Shaft	3	900.04.85.0
5	Bracket bolt	2	900.04.114.0
6	Bracket bolt	2	900.04.115.0
7	Toothed roller	3	900.04.120.0
8	Chain tensioner kpl	1	900.09.30.0
9	Chain tensioner kpl	1	900.09.35.0
10	Chain wheel Z=17 08B-2 Zn	3	900.09.36.0
11	Washer 25,5 x 35 x 5	6	900.09.41.0
12	Table cover	2	900.09.69.0
13	Short table	1	900.09.70.0
14	Roller holder rod Zn	2	900.09.74.0
15	Table axis	1	900.09.79.0
16	Long support var.	1	900.09.85.0

17	Short table support var	1	900.10.29.0
18	Attachment bolt var.	1	305.00.25.0
19	HOSE HYD. 1SN DN08 350 M-90-16/M-90-16	1	1014989
20	TOPLINK EYE - RIGHT 24X3	1	1012788
21	Bearing RAT 25	6	1009761
22	CHAIN RK 08 B-1 (Lange 77 x 12,7 = 977,9)	2	1014421
23	JOINT LINK SG 08-1	2	1010675
24	Screw M8 x 20 (K.V. 8.8)	12	1010560
25	Screw M8x10 Zn	10	1010646
26	PVC head screw	2	1022924
27	Hexagon screw M8x16	2	1006450
28	Threaded pin M8x12	2	1011910
29	Hexagon screw M16x100	6	1010562
30	Hexagon screw M8x20	4	1000107
31	Washer M8 SKM	22	1009844
32	Washer 20x28x1	2	1012389
33	Washer M16 SKM	12	1000177
34	Washer 20x28x2 Zn	2	1011909
35	Washer M8 SKZ	4	1000180
36	Washer 40x50x1	6	1000190
37	Nut M8 Zn	12	1003460
38	Nut M16 Zn	6	1000143
39	DOWEL 8x7x25 A	6	1011280
40	Retaining ring Z25x1.2	3	1004716
41	Retaining ring Z20x1.2	4	1000267
42	Tractor plug 10	1	1000211
43	RUBBER ABSORBER TYPE D 30_15 M8X20	1	1011799
44	QUICK HYD. COUPLING 16X1,5 Z.M-DNP	2	1000775
45	Hyd. female coupling PVC cover - yellow	2	1022305
46	Nut M24 Zn	1	1000157

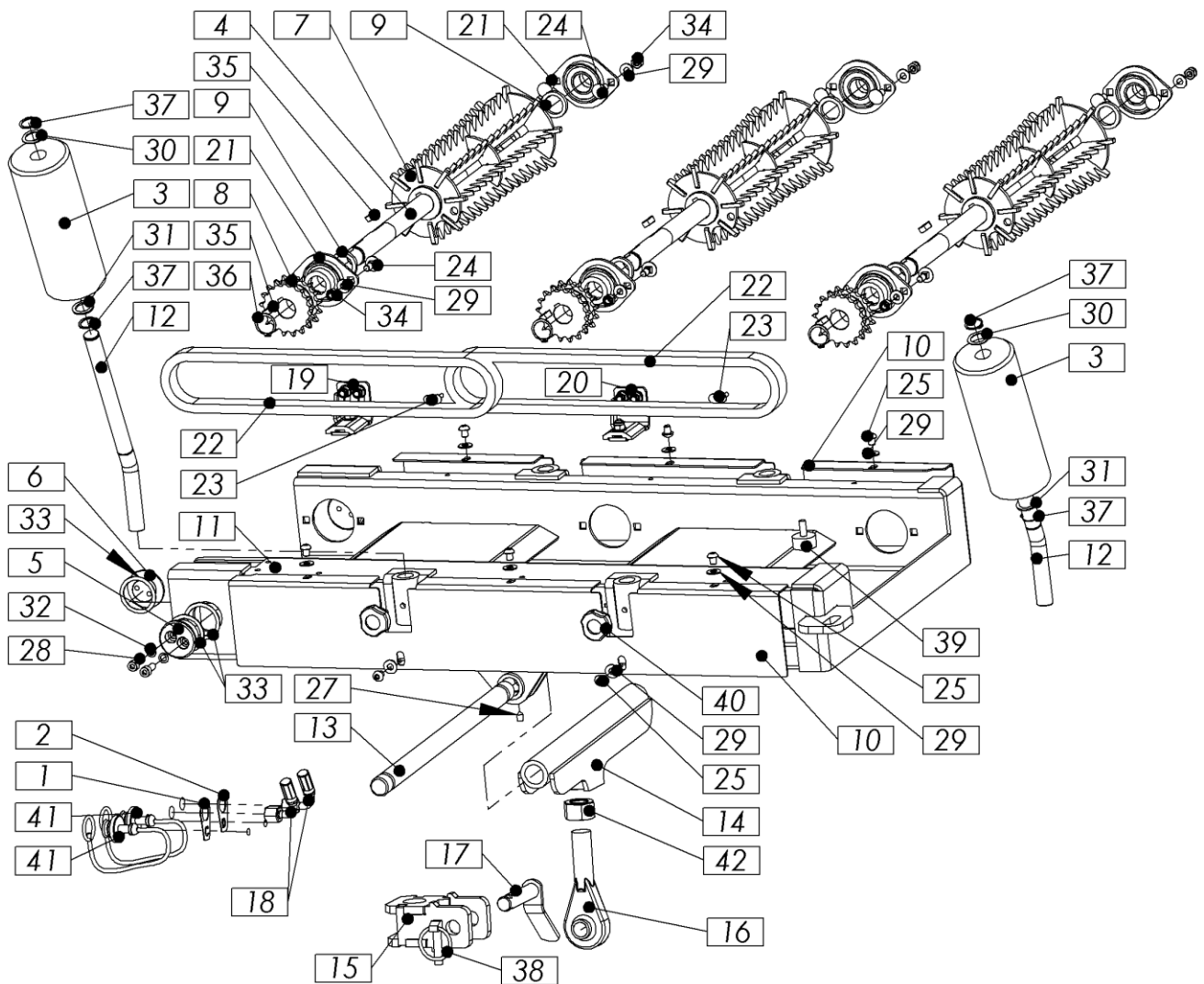


Figure 45: 900.09.150.0 - Short table (RC with wheels)

Pos.	Name	No. of pieces	Number
1	Hose marking C	1	900.00.73.0
2	Hose marking A	1	900.00.74.0
3	Plastic roller	2	900.04.81.0
4	Shaft	3	900.04.85.0
5	Lift table support draw pin B ZN	2	900.04.114.0
6	Lift table support draw pin A ZN	2	900.04.115.0
7	Toothed roller	3	900.04.120.0
8	Chain wheel Z=17 08B-2 Zn	3	900.09.36.0
9	Washer 25,5 x 35 x 5	6	900.09.41.0
10	Table cover	2	900.09.69.0
11	Short table	1	900.09.70.0
12	Roller holder rod Zn	2	900.09.74.0
13	Table axis	1	900.09.79.0

14	Short support kpl	1	900.09.80.0
15	Support bracket	1	900.09.90.0
16	Short table top link eye	1	900.09.112.0
17	Attachment bolt var.	1	305.00.25.0
18	HOSE HYD. 1SN DN08 350 M-90-16/M-90-16	1	1014989
19	Chain tensioner kpl	1	900.09.30.0
20	Chain tensioner kpl	1	900.09.35.0
21	Bearing RAT 25	6	1009761
22	CHAIN RK 08 B-1 (Lange 77 x 12,7 = 977,9)	2	1014421
23	JOINT LINK SG 08-1	2	1010675
24	Screw M8 x 20 (K.V. 8.8)	12	1010560
25	Screw M8x10 Zn	10	1010646
26	Hexagon screw M8x16	2	1006450
27	Threaded pin M8x12	2	1011910
28	Hexagon screw M8x20	2	1000107
29	Washer M8 SKM	22	1009844
30	Washer 20x28x1	2	1012389
31	Washer 20x28x2 Zn	2	1011909
32	Washer M8 SKZ	2	1000180
33	Washer 40x50x1	3	1000190
34	Nut M8 Zn	12	1003460
35	DOWEL 8x7x25 A	6	1011280
36	Retaining ring Z25x1.2	3	1004716
37	Retaining ring Z20x1.2	4	1000267
38	Tractor plug 10	1	1000211
39	RUBBER ABSORBER TYPE D 30_15 M8X20	1	1011799
40	PVC head screw	2	1022924
41	Hyd. female coupling PVC cover - yellow	2	1022305
42	Nut M24 Zn	1	1000157

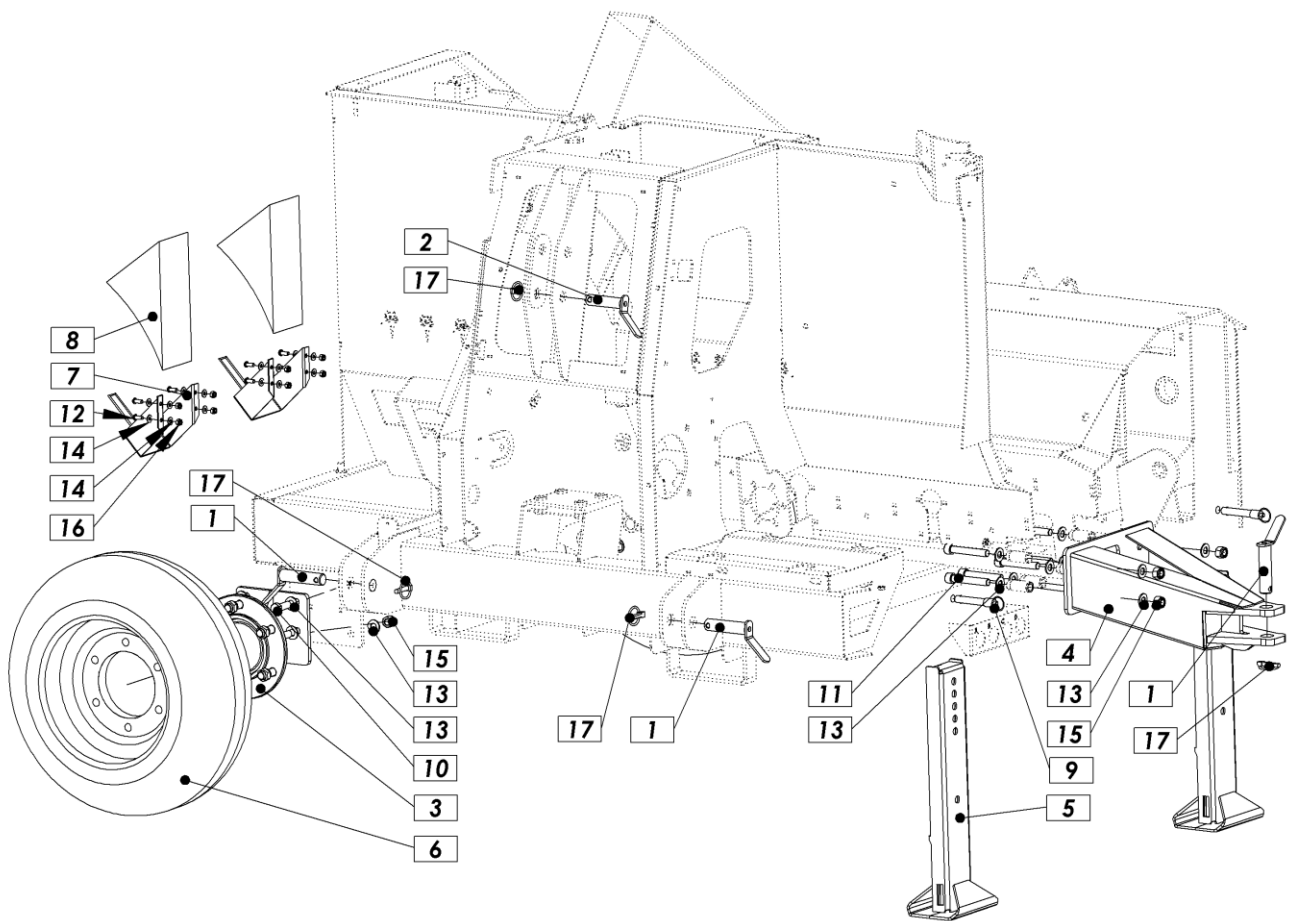


Figure 46: 900.10.00.0 - Chassis kpl.

Pos.	Name	No. of pieces	Number
1	bolt	3	801.00.65.0
2	Bolt	1	702.56.03.0
3	Hub without brakes	2	900.10.05.0
4	Hitch	1	900.10.15.0
5	Leg	2	900.10.20.0
6	Wheel 200/60-14,5	2	1012605
7	Wheel blocker bracket	2	1010744
8	Wheel Blocker	2	1010743
9	Blocking pin	2	1010641
10	Screw M16x45 Zn	8	1003972
11	Hex cap socket screw M16x100	6	1010562
12	Screw M8x20 Zn	8	1005185
13	Washer M16 SKM	28	1000177
14	Washer M8 SKM	16	1009844
15	Nut M16 Zn	14	1000143
16	Nut M8 Zn	8	1003460
17	Tractor pin 10	4	1000211

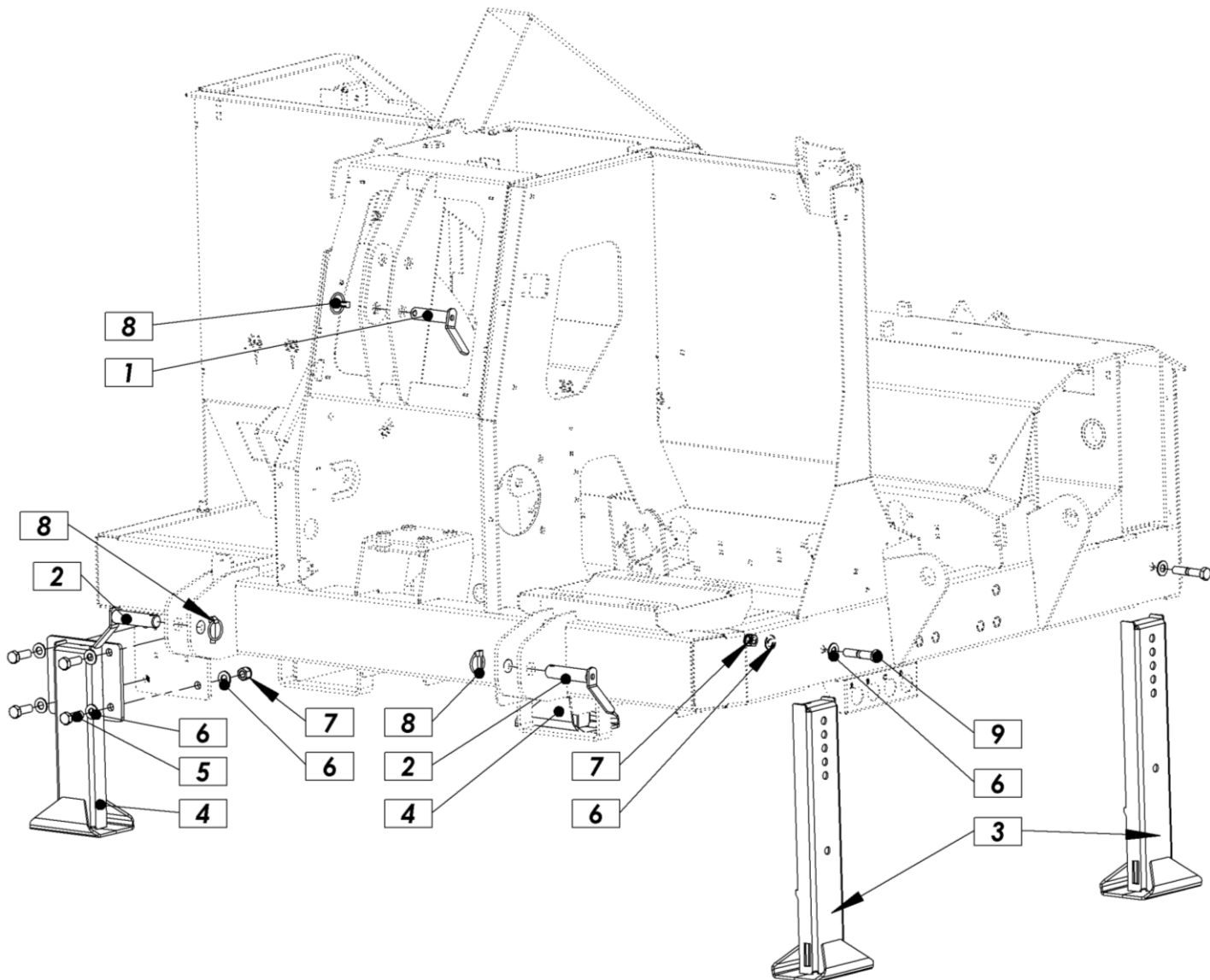


Figure 47: 900.10.100.0 - Support legs kpl.

Pos.	Name	No. of pieces	Number
1	Upper linkage bolt	1	702.56.03.0
2	Bolt	2	801.00.65.0
3	Leg	2	900.10.20.0
4	Fixed leg	2	900.10.25.0
5	Screw M16x45 Zn	8	1003972
6	Washer M16 SKM	20	1000177
7	Nut M16 Zn	10	1000143
8	Tractor pin 10	3	1000211
9	Screw M16x80 Zn	2	1000106

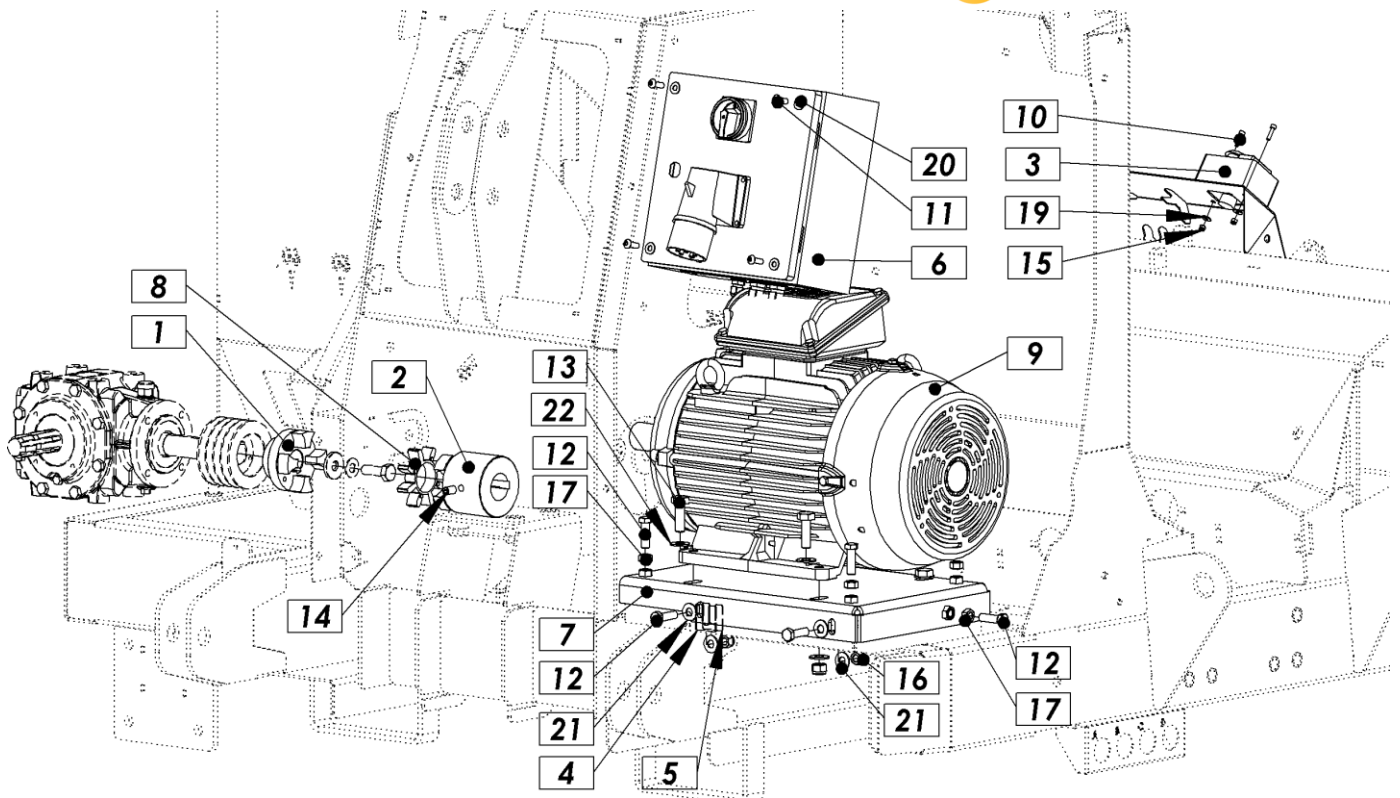


Figure 48: 900.12.00.0 - Electrical equipment kpl.

Pos.	Name	No. of pieces	Number
1	Clutch 42	1	900.02.131.0
2	Clutch 42	1	900.02.132.0
3	Commands ON-OFF	1	900.12.16.0
4	Washer	2	900.12.18.0
5	Washer	2	900.12.19.0
6	Electrical box kpl	1	900.12.20.0
7	Bracket var	1	900.12.45.0
8	Clutch insert GEB-42	1	1013641
9	Electric motor 15.00 kW	1	1012955
10	Hex cap socket screw M5x20	2	1016431
11	Hex cap socket screw M8x25	4	1010586
12	Screw M12x40 Zn	9	1000059
13	Screw M14x45 Zn	4	1006749
14	Threaded pin hex cap socket/cone M12x20	1	1000129
15	Nut M5 Zn	2	1011358
16	Nut M12 Zn	4	1000142
17	Nut M12 Zn	5	1000139
18	Nut M14 Zn	4	1000146
19	Washer M5 Zn	2	1022853
20	Washer M8 SKM	4	1009844
21	Washer M12 SKM	8	1000176
22	Washer M14 SKM	8	1000154