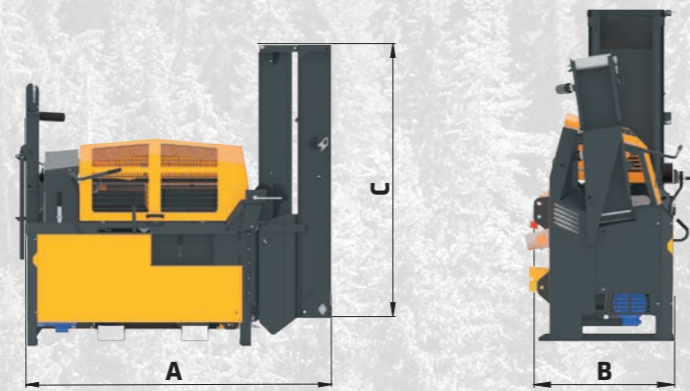


# Technical data



Class		TITAN 43/20J standard		
Model		CD	E	CD+E
Engine power	kW	/	11	11
Required tractor power	kW/HP	30/40 (transport 60/80)	(transport 60/80)	30/40 (transport 60/80)
Maximum log diameter	mm	430	430	430
Splitting force	kN/t	200/20	200/20	200/20
Firewood length	cm	25, 33, 40, 50	25, 33, 40, 50	25, 33, 40, 50
Conveyor belt offset (L/R ±15)	°	Hydraulic	Hydraulic	Hydraulic
Control		Joystick	Joystick	Joystick
Weight	kg	1220	1270	1285
Dimensions	<b>A</b>	mm	2500/1280/2430	2500/1280/2430
	<b>B</b>			
	<b>C</b>			
Oil capacity	l	100	100	100
Adjustable lift table (rubber belt, height cca. 965 / length 2000 mm)		●	●	●
Adjustable chain conveyor - with mechanical winch for inclination adjustment (length 4200 mm)		●	●	/
Splitting knife height adjustment		Hydraulic	Hydraulic	Hydraulic
Log stabilizer		Hydraulic	Hydraulic	Hydraulic
Splitting knife 2-4	1 pc	●	●	●
Splitting knife 2-6 / 2-8 / 2-12	1 pc	●	●	●
Oil heater		/	●	●
Oil cooler		●	●	●

● Standard | ● Option | / Not possible | CD - PTO drive shaft | E - electric motor | CD+E - combination



## TITAN 43/20J STANDARD

**NEW**

The firewood processor TITAN 43/20J standard operated with an electronic control lever (joystick) is an upgraded version of its basic, mechanical model. It features easy operation and ensures fast work performance.





# TITAN 43/20J STANDARD

- Operated with an electronic control lever (joystick)
- Compact bi-directional chain conveyor belt
- Harvester chainsaw bar
- Small and ergonomic



## CONTROL PANEL:

- 1 Emergency stop.
- 2 Optional deactivation switch for the retaining plate.
- 3 On/off and reverse movement adjustment of the conveyor belt.
- 4 Harvest chainsaw bar speed regulation.
- 5 Switch for saving time when splitting short logs.
- 6 Electronic control lever - joystick.



## PATENT

The spring enables the conveyor belt to be easily locked in place when moved to work/transport position, thus reducing the strain on the operator.



Splitting length 25, 33, 40 or 50 cm.



Durable and powerful harvest chainsaw bar.



Log deck.



Electro-hydraulic height adjustment of the splitting knife 2-4, 2-6, 2-8, 2-12.



Oil tank for automatic chain lubrication with an oil level indicator.



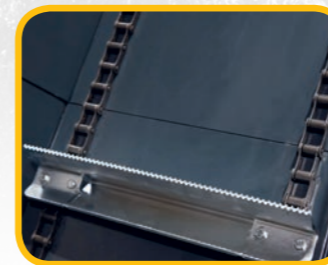
The pressure gauges indicate the splitting pressure and the system pressure for auxiliary functions.



Chain lubrication adjustment system.



Chain tensioning device.



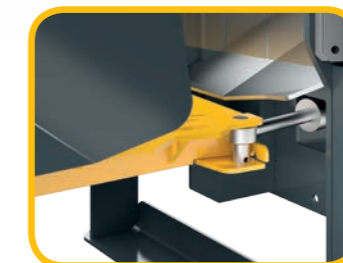
Logs are transported by the conveyor belt with a bar-link chain.



Shutter for retaining the log deck during transport.



Conveyor belt speed regulation.



Conveyor belt adjusting position L/R  $\pm 15^\circ$ .